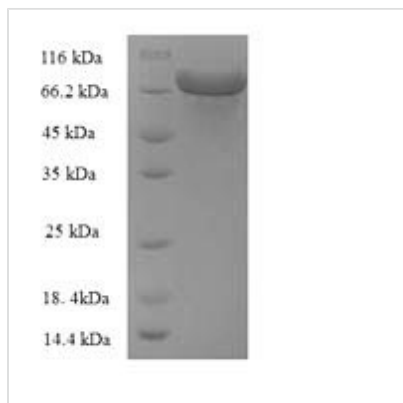




Recombinant Escherichia coli Glucose-6-phosphate 1-dehydrogenase (zwf), partial

Product Code	CSB-RP183744Ba
Relevance	Catalyzes the oxidation of glucose 6-phosphate to 6-phosphogluconolactone.
Abbreviation	Recombinant E.coli zwf protein, partial
Storage	The shelf life is related to many factors, storage state, buffer ingredients, storage temperature and the stability of the protein itself. Generally, the shelf life of liquid form is 6 months at -20°C/-80°C. The shelf life of lyophilized form is 12 months at -20°C/-80°C.
Uniprot No.	P0AC53
Product Type	Recombinant Protein
Immunogen Species	Escherichia coli (strain K12)
Purity	Greater than 90% as determined by SDS-PAGE.
Sequence	MAVTQTAQACDLVIFGAKGDLARRKLLPSLYQLEKAGQLNPDTRIIGVGRADW DKAAYTKVVREALETFMKETIDEGWLDTLSARLDFCNLDVNDTAAFSRLGAML DQKNRITINYFAMPPSTFGAICKGLGEAKLNAKPARVVMKPLGTSLATSQEIN DQVGEYFEECQVYRIDHYLGKETVLNLLALRFANSLFVNNWDNRTIDHVEITVA EEVGIEGRWGYFDKAGQMRDMIQNHLLQILCMIAMSPPSDLSADSIRDEKVKV LKSLRRIDRSNVREKTVRGQYTAGFAQGKKVPGYLEEEGANKSSNTETFVAIR VDIDNWRWAGVPFYLRTGKRLPTKCSEVVVYFKTPELNLFKESWQDLQPQNKL TIRLQPDEGVDIQVLNKVPGLDHKHNLQITKLDLSYSETFNQTHLADAYERLLLE TMRGIQALFVRRDEVVEEAWKWVDSITEAWAMDNDAPKPYQAGTWGPVASVA MITRDGRS
Research Area	Others
Source	E.coli
Target Names	zwf
Expression Region	1-486aa
Notes	Repeated freezing and thawing is not recommended. Store working aliquots at 4°C for up to one week.
Tag Info	N-terminal GST-tagged
Mol. Weight	82.0kDa
Protein Length	Partial
Image	



(Tris-Glycine gel) Discontinuous SDS-PAGE (reduced) with 5% enrichment gel and 15% separation gel.

Reconstitution

We recommend that this vial be briefly centrifuged prior to opening to bring the contents to the bottom. Please reconstitute protein in deionized sterile water to a concentration of 0.1-1.0 mg/mL. We recommend to add 5-50% of glycerol (final concentration) and aliquot for long-term storage at -20°C/-80°C. Our default final concentration of glycerol is 50%. Customers could use it as reference.

Shelf Life

The shelf life is related to many factors, storage state, buffer ingredients, storage temperature and the stability of the protein itself. Generally, the shelf life of liquid form is 6 months at -20°C/-80°C. The shelf life of lyophilized form is 12 months at -20°C/-80°C.