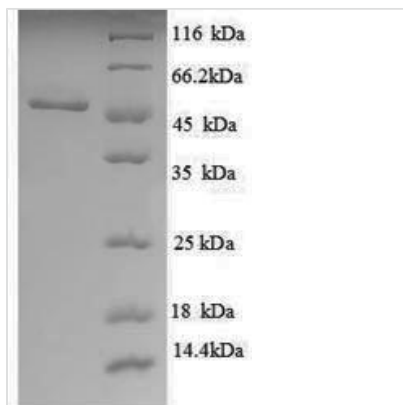


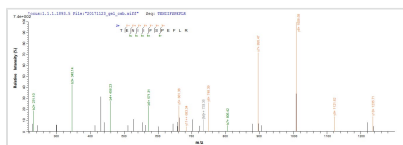


Recombinant Escherichia coli UDP-glucose 6-dehydrogenase (ugd), partial

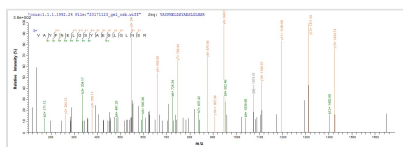
Product Code	CSB-RP171174Ba
Abbreviation	Recombinant E.coli ugd protein, partial
Storage	The shelf life is related to many factors, storage state, buffer ingredients, storage temperature and the stability of the protein itself. Generally, the shelf life of liquid form is 6 months at -20°C/-80°C. The shelf life of lyophilized form is 12 months at -20°C/-80°C.
Uniprot No.	P76373
Product Type	Recombinant Protein
Immunogen Species	Escherichia coli (strain K12)
Purity	Greater than 90% as determined by SDS-PAGE.
Sequence	KITISGTGYVGLSNGLLIAQNHEVVALDILPSRVAMLNDRISPIVDKEIQQFLQSD KIHFNATLDKNEAYRDADYVIIATPTDYDPKTNFYNTSSVESVIKDVVEINPYAV MVIKSTVPVGFTAAMHKKYRTENIIFSPEFLREGKALYDNLHPSRIVIGERSERA ERFAALLQEGAIAKQNIPLFTDSTEAEAIKLFANTYLAMRVAYFNELDSYAESLG LNSRQIIEGVCLDPRIGNHYNNPSFGYGGYCLPKDTKQLLANYQSVPNNLISAI VDANRTRKDFIADAILSRKPQVVGIYRLIMKSGSDNFRASSIQGIMKRIKAKGVE VIIYEPVMKEDSFFNSRLERDLATFKQQADVIISNRMAEELKDVADKVYTRDLF GSD
Research Area	Others
Source	E.coli
Target Names	ugd
Expression Region	2-388
Notes	Repeated freezing and thawing is not recommended. Store working aliquots at 4°C for up to one week.
Tag Info	N-terminal 6xHis-tagged
Mol. Weight	47.5kDa
Protein Length	Partial
Image	



(Tris-Glycine gel) Discontinuous SDS-PAGE (reduced) with 5% enrichment gel and 15% separation gel.



Based on the SEQUEST from database of E.coli host and target protein, the LC-MS/MS Analysis result of CSB-RP171174Ba could indicate that this peptide derived from E.coli-expressed Escherichia coli (strain K12) ugd.



Based on the SEQUEST from database of E.coli host and target protein, the LC-MS/MS Analysis result of CSB-RP171174Ba could indicate that this peptide derived from E.coli-expressed Escherichia coli (strain K12) ugd.

Reconstitution

We recommend that this vial be briefly centrifuged prior to opening to bring the contents to the bottom. Please reconstitute protein in deionized sterile water to a concentration of 0.1-1.0 mg/mL. We recommend to add 5-50% of glycerol (final concentration) and aliquot for long-term storage at -20°C/-80°C. Our default final concentration of glycerol is 50%. Customers could use it as reference.

Shelf Life

The shelf life is related to many factors, storage state, buffer ingredients, storage temperature and the stability of the protein itself.

Generally, the shelf life of liquid form is 6 months at -20°C/-80°C. The shelf life of lyophilized form is 12 months at -20°C/-80°C.