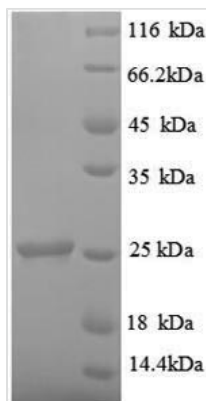




# Recombinant Rat Metalloproteinase inhibitor 1 (Timp1)

<b>Product Code</b>	CSB-RP167194r
<b>Relevance</b>	Metalloproteinase inhibitor that functions by forming one to one complexes with target metalloproteinases, such as collagenases, and irreversibly inactivates th by binding to their catalytic zinc cofactor. Acts on MMP1, MMP2, MMP3, MMP7, MMP8, MMP9, MMP10, MMP11, MMP12, MMP13 and MMP16. Does not act on MMP14. Also functions as a growth factor that regulates cell differentiation, migration and cell death and activates cellular signaling cascades via CD63 and ITGB1. Plays a role in integrin signaling. Also stimulates steroidogenesis by Leydig and ovarian granuloma cells; procathepsin L is required for maximal activity.
<b>Abbreviation</b>	Recombinant Rat Timp1 protein
<b>Storage</b>	The shelf life is related to many factors, storage state, buffer ingredients, storage temperature and the stability of the protein itself. Generally, the shelf life of liquid form is 6 months at -20°C/-80°C. The shelf life of lyophilized form is 12 months at -20°C/-80°C.
<b>Uniprot No.</b>	P30120
<b>Alias</b>	Tissue inhibitor of metalloproteinases 1 ;TIMP-1
<b>Product Type</b>	Recombinant Protein
<b>Immunogen Species</b>	Rattus norvegicus (Rat)
<b>Purity</b>	Greater than 90% as determined by SDS-PAGE.
<b>Sequence</b>	CSCAPTHPQTAF CNSDLVIRAKFMGSP EIIETTLYQRYEIKMTKMLKGFD AVGN ATGFRFAYTPAMESLCGYVHKSQNRSEEF LIAGRLRNGNLHITACSF LVPWHN LSPAQQKAFVKTYSAGCGVCTVFPCSAIPCKLES DSHCLWTDQILMGSEKGY QSDHFA CLPRNPD LCTWQYLGVSMT RSLPLAKAEA
<b>Research Area</b>	Others
<b>Source</b>	E.coli
<b>Target Names</b>	Timp1
<b>Expression Region</b>	24-217aa
<b>Notes</b>	Repeated freezing and thawing is not recommended. Store working aliquots at 4°C for up to one week.
<b>Tag Info</b>	N-terminal 6xHis-tagged
<b>Mol. Weight</b>	25.5kDa
<b>Protein Length</b>	Full Length of Mature Protein
<b>Image</b>	



(Tris-Glycine gel) Discontinuous SDS-PAGE (reduced) with 5% enrichment gel and 15% separation gel.

### Reconstitution

We recommend that this vial be briefly centrifuged prior to opening to bring the contents to the bottom. Please reconstitute protein in deionized sterile water to a concentration of 0.1-1.0 mg/mL. We recommend to add 5-50% of glycerol (final concentration) and aliquot for long-term storage at -20°C/-80°C. Our default final concentration of glycerol is 50%. Customers could use it as reference.

### Shelf Life

The shelf life is related to many factors, storage state, buffer ingredients, storage temperature and the stability of the protein itself. Generally, the shelf life of liquid form is 6 months at -20°C/-80°C. The shelf life of lyophilized form is 12 months at -20°C/-80°C.