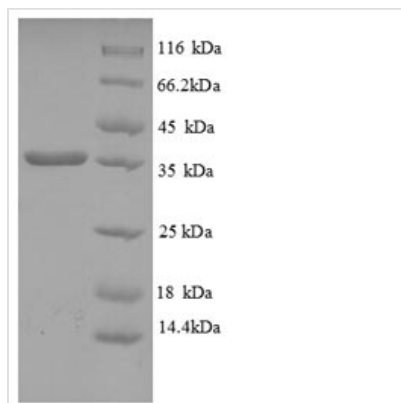




# Recombinant Human HLA-C protein (HLA-C), partial

<b>Product Code</b>	CSB-RP150994h
<b>Relevance</b>	Involved in the presentation of foreign antigens to the immune syst.SAAS annotation
<b>Abbreviation</b>	Recombinant Human HLA-C protein, partial
<b>Storage</b>	The shelf life is related to many factors, storage state, buffer ingredients, storage temperature and the stability of the protein itself. Generally, the shelf life of liquid form is 6 months at -20°C/-80°C. The shelf life of lyophilized form is 12 months at -20°C/-80°C.
<b>Uniprot No.</b>	O78179
<b>Product Type</b>	Recombinant Protein
<b>Purity</b>	Greater than 90% as determined by SDS-PAGE.
<b>Sequence</b>	CSHSMRYFYTA VSRPGRGEP RFI AVGYVDDTQFVRFDS DAASPRGEP RAPW VEQEGPEYWDRETQKYKRQAQTDRVSLRNLRGYYNQSEAGSHTLQWMYGC DLGPDGRLLRGYDQSAYDGKDYIALNEDLRSWTAADTAAQITQRKWEAARAA EQQRAYLEGTCVEWLRRYLENGKETLQRAEHPKTHVTHHLVSDHEATLRCW ALGFYPAEITLTWQRDGEDQTQDTEL VETRPAGDGT FQKWA AVVVPSGEEQR YTCHVQHEGLPEPLTLR WEPSSQPTIPI
<b>Research Area</b>	Immunology
<b>Source</b>	E.coli
<b>Target Names</b>	HLA-C
<b>Expression Region</b>	25-308aa
<b>Notes</b>	Repeated freezing and thawing is not recommended. Store working aliquots at 4°C for up to one week.
<b>Tag Info</b>	N-terminal 6xHis-tagged
<b>Mol. Weight</b>	36.7kDa
<b>Protein Length</b>	Partial
<b>Image</b>	



(Tris-Glycine gel) Discontinuous SDS-PAGE (reduced) with 5% enrichment gel and 15% separation gel.

## Description

Recombinant Human HLA-C protein is a prokaryotic system E.coli expressed Partial protein. To make this HLA-C recombinant protein, the HLA-C gene is synthesized and cloned into the E.coli system expression vector, and then it was transformed into protein-expressing host E Coli for expression, the other steps are testing for the identification of recombinant protein, large scale production and target protein Isolation and purification. The purity of the final HLA-C protein is 90%+ as determined by SDS-PAGE.

HLA-C belongs to the HLA class I heavy chain receptors in human. This protein is a heterodimer consisting of a HLA-C mature gene product (a heavy chain) and a light chain ( $\beta$ 2-microglobulin). The heavy chain is anchored in the membrane. MHC Class I molecules, like HLA-C present small peptides to the immune system, allowing cytotoxic T lymphocytes to bind to mature HLA cell surface proteins via the antigen-binding groove. Class I genes mainly bind antigens to Presented to CD8+ T cells, class II genes primarily present antigens to CD4+ T cells.

## Reconstitution

We recommend that this vial be briefly centrifuged prior to opening to bring the contents to the bottom. Please reconstitute protein in deionized sterile water to a concentration of 0.1-1.0 mg/mL. We recommend to add 5-50% of glycerol (final concentration) and aliquot for long-term storage at -20°C/-80°C. Our default final concentration of glycerol is 50%. Customers could use it as reference.

## Shelf Life

The shelf life is related to many factors, storage state, buffer ingredients, storage temperature and the stability of the protein itself. Generally, the shelf life of liquid form is 6 months at -20°C/-80°C. The shelf life of lyophilized form is 12 months at -20°C/-80°C.