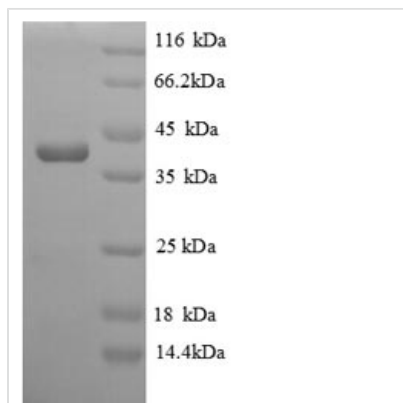




Recombinant *Saccharomyces cerevisiae* Homocysteine S-methyltransferase 1 (MHT1)

Product Code	CSB-RP142674Ba
Relevance	Homocysteine S-methyltransferase involved in the conversion of S-adenosylmethionine (AdoMet) to methionine to control the methionine/AdoMet ratio. Also converts S-methylmethionine (SMM) to methionine.
Abbreviation	Recombinant <i>Saccharomyces cerevisiae</i> MHT1 protein
Storage	The shelf life is related to many factors, storage state, buffer ingredients, storage temperature and the stability of the protein itself. Generally, the shelf life of liquid form is 6 months at -20°C/-80°C. The shelf life of lyophilized form is 12 months at -20°C/-80°C.
Uniprot No.	Q12525
Alias	S-methylmethionine:homocysteine methyltransferase 1 ;SMM:Hcy S-methyltransferase 1
Product Type	Recombinant Protein
Immunogen Species	<i>Saccharomyces cerevisiae</i> (strain ATCC 204508 / S288c) (Baker's yeast)
Purity	Greater than 90% as determined by SDS-PAGE.
Sequence	MKRIPIKELIVEHPGKVLILDGGQGTELENRGININSPVWSAAPFTSESWEPSS QERKVVEEMYRDFMIAGANILMTITYQANFQSISENTSIKTLAAYKRFLDKIVSFT REFIGEERYLIGSIGPWAAHVSCEYTG DYGPHPENIDYYGFFKPQLENFNQNR DIDLIGFETIPNFHELKAILSWDEDIISKPFYIGLSVDDNSLLRDGTTLEEISVHIKG LGNKINKNLLLGMVNCVSFNQSA LILKMLHEHLPGMPLLVYPNSGEIYNPKEKT WHRPTNKLDDWETTVKKFVDNGARIIGGCCRTSPKDIAEIASAVDKYS
Research Area	Others
Source	E.coli
Target Names	MHT1
Expression Region	1-324aa
Notes	Repeated freezing and thawing is not recommended. Store working aliquots at 4°C for up to one week.
Tag Info	N-terminal 6xHis-tagged
Mol. Weight	40.7kDa
Protein Length	Full Length
Image	



(Tris-Glycine gel) Discontinuous SDS-PAGE (reduced) with 5% enrichment gel and 15% separation gel.

Reconstitution

We recommend that this vial be briefly centrifuged prior to opening to bring the contents to the bottom. Please reconstitute protein in deionized sterile water to a concentration of 0.1-1.0 mg/mL. We recommend to add 5-50% of glycerol (final concentration) and aliquot for long-term storage at -20°C/-80°C. Our default final concentration of glycerol is 50%. Customers could use it as reference.

Shelf Life

The shelf life is related to many factors, storage state, buffer ingredients, storage temperature and the stability of the protein itself. Generally, the shelf life of liquid form is 6 months at -20°C/-80°C. The shelf life of lyophilized form is 12 months at -20°C/-80°C.