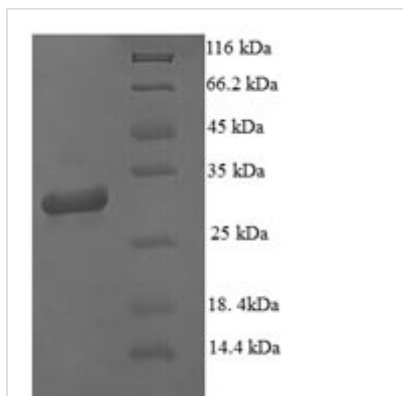




# Recombinant Human Microtubule-associated protein 1S (MAP1S), partial

<b>Product Code</b>	CSB-EP013407HU
<b>Relevance</b>	Microtubule-associated protein that mediates aggregation of mitochondria resulting in cell death and genomic destruction (MAGD). Plays a role in anchoring the microtubule organizing center to the centrosomes. Binds to DNA. Plays a role in apoptosis. Involved in the formation of microtubule bundles .
<b>Abbreviation</b>	Recombinant Human MAP1S protein, partial
<b>Storage</b>	The shelf life is related to many factors, storage state, buffer ingredients, storage temperature and the stability of the protein itself. Generally, the shelf life of liquid form is 6 months at -20°C/-80°C. The shelf life of lyophilized form is 12 months at -20°C/-80°C.
<b>Uniprot No.</b>	Q66K74
<b>Alias</b>	BPY2-interacting protein 1;Microtubule-associated protein 8;Variable charge Y chromosome 2-interacting protein 1 ;VCY2-interacting protein 1 ;VCY2IP-1
<b>Product Type</b>	Recombinant Protein
<b>Immunogen Species</b>	Homo sapiens (Human)
<b>Purity</b>	Greater than 90% as determined by SDS-PAGE.
<b>Sequence</b>	<p>           LSDSDPVPLAPGAADSDDETEGFGVPRHDPLPDPLKVPPPLPDPSSICMVDPE            MLPPKTARQTENVSRTRKPLARPNSRAAAPKATPVAAAKTKGLAGGDRASRP            LSARSEPSEKGGRAPLSRKSSTPKTATRGPSGSASSRPGVSATPPKSPVYLDL            AYLPSGSSAHLVDEEFFQVRALCYVISGQDQRKEEGMRAVLDAALLASKQHW            DRDLQVTLIPTFDSVAMHTWYAETHARHQALGITVLGSNSMVMQDDAFP         </p>
<b>Research Area</b>	Apoptosis
<b>Source</b>	E.coli
<b>Target Names</b>	MAP1S
<b>Expression Region</b>	794-1053aa
<b>Notes</b>	Repeated freezing and thawing is not recommended. Store working aliquots at 4°C for up to one week.
<b>Tag Info</b>	N-terminal 6xHis-tagged
<b>Mol. Weight</b>	31.7kDa
<b>Protein Length</b>	Partial
<b>Image</b>	



(Tris-Glycine gel) Discontinuous SDS-PAGE (reduced) with 5% enrichment gel and 15% separation gel.

## Reconstitution

We recommend that this vial be briefly centrifuged prior to opening to bring the contents to the bottom. Please reconstitute protein in deionized sterile water to a concentration of 0.1-1.0 mg/mL. We recommend to add 5-50% of glycerol (final concentration) and aliquot for long-term storage at -20°C/-80°C. Our default final concentration of glycerol is 50%. Customers could use it as reference.

## Shelf Life

The shelf life is related to many factors, storage state, buffer ingredients, storage temperature and the stability of the protein itself.

Generally, the shelf life of liquid form is 6 months at -20°C/-80°C. The shelf life of lyophilized form is 12 months at -20°C/-80°C.