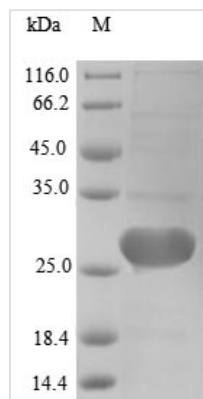




Recombinant Human cDNA FLJ56323, highly similar to Methylated-DNA--protein-cysteinemethyltransferase (EC 2.1.1.63), partial

Product Code	CSB-RP118594h
Abbreviation	Recombinant Human MGMT protein, partial
Storage	The shelf life is related to many factors, storage state, buffer ingredients, storage temperature and the stability of the protein itself. Generally, the shelf life of liquid form is 6 months at -20°C/-80°C. The shelf life of lyophilized form is 12 months at -20°C/-80°C.
Uniprot No.	B4DEE8
Product Type	Recombinant Protein
Purity	Greater than 90% as determined by SDS-PAGE.
Sequence	QPAPLERFASRRPQVLAVRTVCDLVLGKMDKDCMKRTTLDSP LGKLELSGC EQGLHEIKLLGKGTSAADAVEVPAPAAVLGGPEPLMQCTAWLNAYFHQPEAIE EFPVPALHHPVFQQESFTRQVLWKLLKVVKFGEVISYQQLAALAGNPKAARAV GGAMRGNPVPILIPCHRVVCSSGAVGNYSGLAVKEWLLAHEGHRLGKPGLG GSSGLAGAWLKGAGATSGSPAGRN
Research Area	Epigenetics and Nuclear Signaling
Source	E.coli
Target Names	EC 2.1.1.63
Expression Region	4-238aa
Notes	Repeated freezing and thawing is not recommended. Store working aliquots at 4°C for up to one week.
Tag Info	N-terminal 6xHis-tagged
Mol. Weight	28.7kDa
Protein Length	Partial

Image



(Tris-Glycine gel) Discontinuous SDS-PAGE (reduced) with 5% enrichment gel and 15% separation gel.



Reconstitution

We recommend that this vial be briefly centrifuged prior to opening to bring the contents to the bottom. Please reconstitute protein in deionized sterile water to a concentration of 0.1-1.0 mg/mL. We recommend to add 5-50% of glycerol (final concentration) and aliquot for long-term storage at -20°C/-80°C. Our default final concentration of glycerol is 50%. Customers could use it as reference.

Shelf Life

The shelf life is related to many factors, storage state, buffer ingredients, storage temperature and the stability of the protein itself. Generally, the shelf life of liquid form is 6 months at -20°C/-80°C. The shelf life of lyophilized form is 12 months at -20°C/-80°C.