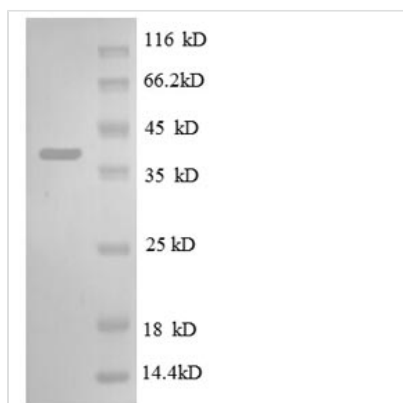




Recombinant Escherichia coli 30S ribosomal protein S13 (rpsM)

Product Code	CSB-RP087344Ba
Relevance	Located at the top of the head of the 30S subunit, it contacts several helices of the 16S rRNA.
Abbreviation	Recombinant E.coli rpsM protein
Storage	The shelf life is related to many factors, storage state, buffer ingredients, storage temperature and the stability of the protein itself. Generally, the shelf life of liquid form is 6 months at -20°C/-80°C. The shelf life of lyophilized form is 12 months at -20°C/-80°C.
Uniprot No.	P0A7S9
Product Type	Recombinant Protein
Immunogen Species	Escherichia coli (strain K12)
Purity	Greater than 90% as determined by SDS-PAGE.
Sequence	ARIAGINIPDHKHAVIALTSIYGVGKTRSKAILAAAGIAEDVKISELSEGQIDTLRD EVAKFVVEGDLRREISMSIKRLMDLGCYRGLRHRRGLPVRGQRTKTNARTRK GPRKPIKK
Research Area	Others
Source	E.coli
Target Names	rpsM
Expression Region	2-118aa
Notes	Repeated freezing and thawing is not recommended. Store working aliquots at 4°C for up to one week.
Tag Info	N-terminal GST-tagged
Mol. Weight	40.0kDa
Protein Length	Full Length of Mature Protein

Image



(Tris-Glycine gel) Discontinuous SDS-PAGE (reduced) with 5% enrichment gel and 15% separation gel.



Reconstitution

We recommend that this vial be briefly centrifuged prior to opening to bring the contents to the bottom. Please reconstitute protein in deionized sterile water to a concentration of 0.1-1.0 mg/mL. We recommend to add 5-50% of glycerol (final concentration) and aliquot for long-term storage at -20°C/-80°C. Our default final concentration of glycerol is 50%. Customers could use it as reference.

Shelf Life

The shelf life is related to many factors, storage state, buffer ingredients, storage temperature and the stability of the protein itself. Generally, the shelf life of liquid form is 6 months at -20°C/-80°C. The shelf life of lyophilized form is 12 months at -20°C/-80°C.