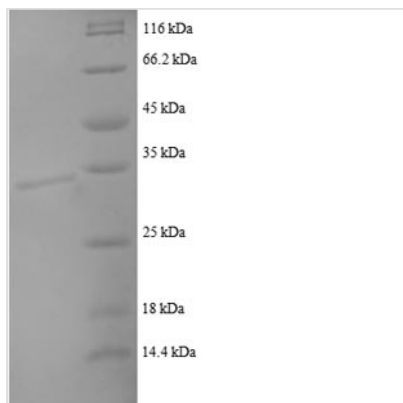




# Recombinant Human C-C motif chemokine 22 (CCL22), partial

<b>Product Code</b>	CSB-RP058944h
<b>Relevance</b>	May play a role in the trafficking of activated/effector T-lymphocytes to inflammatory sites and other aspects of activated T-lymphocyte physiology. Chotactic for monocytes, dendritic cells and natural killer cells. Mild choattractant for primary activated T-lymphocytes and a potent choattractant for chronically activated T-lymphocytes but has no choattractant activity for neutrophils, eosinophils, and resting T-lymphocytes. Binds to CCR4. Processed forms MDC(3-69), MDC(5-69) and MDC(7-69) se not be active.
<b>Abbreviation</b>	Recombinant Human CCL22 protein, partial
<b>Storage</b>	The shelf life is related to many factors, storage state, buffer ingredients, storage temperature and the stability of the protein itself. Generally, the shelf life of liquid form is 6 months at -20°C/-80°C. The shelf life of lyophilized form is 12 months at -20°C/-80°C.
<b>Uniprot No.</b>	O00626
<b>Alias</b>	CC chemokine STCP-1MDC(1-69)Macrophage-derived chemokine;Small-inducible cytokine A22Stimulated T-cell chemotactic protein 1
<b>Product Type</b>	Recombinant Protein
<b>Immunogen Species</b>	Homo sapiens (Human)
<b>Purity</b>	Greater than 90% as determined by SDS-PAGE.
<b>Sequence</b>	GPYGANMEDSVCCRDYVRYRLPLRVVKHFWTSDSCPRPGVVLLTFRDKEICADPRVP
<b>Research Area</b>	Immunology
<b>Source</b>	E.coli
<b>Target Names</b>	CCL22
<b>Expression Region</b>	25-82aa
<b>Notes</b>	Repeated freezing and thawing is not recommended. Store working aliquots at 4°C for up to one week.
<b>Tag Info</b>	N-terminal GST-tagged
<b>Mol. Weight</b>	33.7kDa
<b>Protein Length</b>	Partial
<b>Image</b>	



(Tris-Glycine gel) Discontinuous SDS-PAGE (reduced) with 5% enrichment gel and 15% separation gel.

### Reconstitution

We recommend that this vial be briefly centrifuged prior to opening to bring the contents to the bottom. Please reconstitute protein in deionized sterile water to a concentration of 0.1-1.0 mg/mL. We recommend to add 5-50% of glycerol (final concentration) and aliquot for long-term storage at -20°C/-80°C. Our default final concentration of glycerol is 50%. Customers could use it as reference.

### Shelf Life

The shelf life is related to many factors, storage state, buffer ingredients, storage temperature and the stability of the protein itself. Generally, the shelf life of liquid form is 6 months at -20°C/-80°C. The shelf life of lyophilized form is 12 months at -20°C/-80°C.