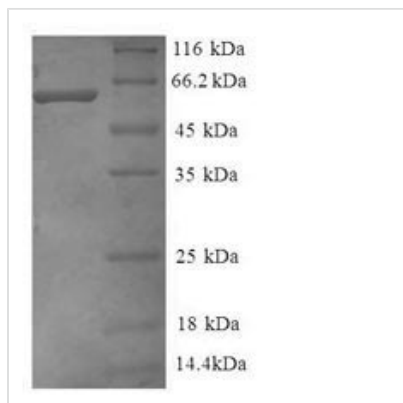




# Recombinant Human Guanine nucleotide-binding protein G (I)/G (S)/G (T) subunit beta-2 (GNB2), partial

|                          |  |
|--------------------------|--|
| <b>Product Code</b>      | CSB-RP050644h  |
| <b>Relevance</b>         | Guanine nucleotide-binding proteins (G proteins) are involved as a modulator or transducer in various transmembrane signaling systems. The beta and gamma chains are required for the GTPase activity, for replacement of GDP by GTP, and for G protein-effector interaction.  |
| <b>Abbreviation</b>      | Recombinant Human GNB2 protein, partial  |
| <b>Storage</b>           | The shelf life is related to many factors, storage state, buffer ingredients, storage temperature and the stability of the protein itself. Generally, the shelf life of liquid form is 6 months at -20°C/-80°C. The shelf life of lyophilized form is 12 months at -20°C/-80°C.  |
| <b>Uniprot No.</b>       | P62879   |
| <b>Alias</b>             | G protein subunit beta-2Transducin beta chain 2  |
| <b>Product Type</b>      | Recombinant Protein  |
| <b>Immunogen Species</b> | Homo sapiens (Human)   |
| <b>Purity</b>            | Greater than 90% as determined by SDS-PAGE.  |
| <b>Sequence</b>          | ARKACGDSTLTQITAGLDPVGRIQMRTTRTLRGHLAKIYAMHWGTDSRLLVSA<br>SQDGKLIWDSYTTNKVHAIPLRSSWVMTCAYAPSGNFVACGGGLDNICSIYSLK<br>TREGNVRVSRELPGHTGYLSCCRFLDDNQIITSSGDTTCALWDIETGQQTVGF<br>AGHSGDVMSLSLAPDGRTFVSGACDASIKLWDVDRDSMCRQTFIGHESDINAV<br>AFFPNGYAFTTGSDDATCRLFDLRADQELLMYSHDNIICGITSVAFSRSGRLLL<br>AGYDDFNCNIWDAMKGDRAVLGHGHDNRVSLGLVTDDGMAV |
| <b>Research Area</b>     | Metabolism   |
| <b>Source</b>            | E.coli   |
| <b>Target Names</b>      | GNB2   |
| <b>Expression Region</b> | 21-327aa   |
| <b>Notes</b>             | Repeated freezing and thawing is not recommended. Store working aliquots at 4°C for up to one week.  |
| <b>Tag Info</b>          | N-terminal GST-tagged  |
| <b>Mol. Weight</b>       | 60.4kDa  |
| <b>Protein Length</b>    | Partial  |
| <b>Image</b>             |  |



(Tris-Glycine gel) Discontinuous SDS-PAGE (reduced) with 5% enrichment gel and 15% separation gel.

### Reconstitution

We recommend that this vial be briefly centrifuged prior to opening to bring the contents to the bottom. Please reconstitute protein in deionized sterile water to a concentration of 0.1-1.0 mg/mL. We recommend to add 5-50% of glycerol (final concentration) and aliquot for long-term storage at -20°C/-80°C. Our default final concentration of glycerol is 50%. Customers could use it as reference.

### Shelf Life

The shelf life is related to many factors, storage state, buffer ingredients, storage temperature and the stability of the protein itself. Generally, the shelf life of liquid form is 6 months at -20°C/-80°C. The shelf life of lyophilized form is 12 months at -20°C/-80°C.