

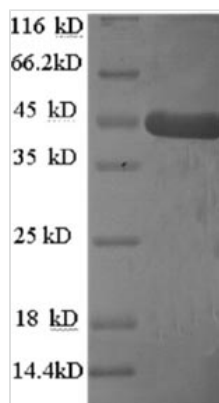


# Recombinant Human Homer protein homolog 1 (HOMER1)

<b>Product Code</b>	CSB-RP030074h
<b>Relevance</b>	Postsynaptic density scaffolding protein. Binds and cross-links Cytoplasmic domain regions of GRM1, GRM5, ITPR1, DNM3, RYR1, RYR2, SHANK1 and SHANK3. By physically linking GRM1 and GRM5 with ER-associated ITPR1 receptors, it aids the coupling of surface receptors to intracellular calcium release. May also couple GRM1 to PI3 kinase through its interaction with AGAP2. Isoform 1 regulates the trafficking and surface expression of GRM5. Isoform 3 acts as a natural dominant negative, in dynamic competition with constitutively expressed isoform 1 to regulate synaptic metabotropic glutamate function. Isoform 3, may be involved in the structural changes that occur at synapses during long-lasting neuronal plasticity and development.
<b>Abbreviation</b>	Recombinant Human HOMER1 protein
<b>Storage</b>	The shelf life is related to many factors, storage state, buffer ingredients, storage temperature and the stability of the protein itself. Generally, the shelf life of liquid form is 6 months at -20°C/-80°C. The shelf life of lyophilized form is 12 months at -20°C/-80°C.
<b>Uniprot No.</b>	Q86YM7
<b>Product Type</b>	Recombinant Protein
<b>Immunogen Species</b>	Homo sapiens (Human)
<b>Purity</b>	Greater than 90% as determined by SDS-PAGE.
<b>Sequence</b>	MGEQPIFSTRAHVFQIDPNTKKNWVPTSKHAVTVSYFYDSTRNVYRIISLDGSK AIINSTITPNMTFTKTSQKFGQWADSRANTVYGLGFSSEHHLKFAEKFAQEFKE AARLAKEKSQEKMELTSTPSQESAGGDLQSP LTPESINGTDDERTPDVTQNSE PRAEPTQNALPFSHSSAISKHWEAELATLKGNNAKLTAALLESTANVKQWKQQ LAAYQEEAERLHKRVTELECVSSQANAVHHTKTELNQTIQELET LKLKEEEIE RLKQEIDNARELQEQRDSL TQKLQEVEIRNKDLEGQLSDLEQRLEKSQNEQEA FRNNLKTLL EILDGKIFELTEL RDN LAKLLECS
<b>Research Area</b>	Neuroscience
<b>Source</b>	E.coli
<b>Target Names</b>	HOMER1
<b>Expression Region</b>	1-354aa
<b>Notes</b>	Repeated freezing and thawing is not recommended. Store working aliquots at 4°C for up to one week.
<b>Tag Info</b>	N-terminal 6xHis-tagged
<b>Mol. Weight</b>	44.3kDa
<b>Protein Length</b>	Full Length



## Image



(Tris-Glycine gel) Discontinuous SDS-PAGE (reduced) with 5% enrichment gel and 15% separation gel.

## Reconstitution

We recommend that this vial be briefly centrifuged prior to opening to bring the contents to the bottom. Please reconstitute protein in deionized sterile water to a concentration of 0.1-1.0 mg/mL. We recommend to add 5-50% of glycerol (final concentration) and aliquot for long-term storage at -20°C/-80°C. Our default final concentration of glycerol is 50%. Customers could use it as reference.

## Shelf Life

The shelf life is related to many factors, storage state, buffer ingredients, storage temperature and the stability of the protein itself. Generally, the shelf life of liquid form is 6 months at -20°C/-80°C. The shelf life of lyophilized form is 12 months at -20°C/-80°C.