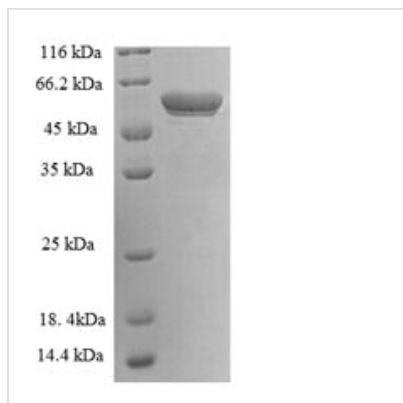


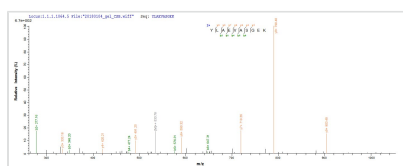


Recombinant Human 14-3-3 protein eta (YWHAH), partial

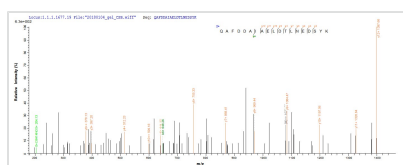
Product Code	CSB-RP021744h
Relevance	Adapter protein implicated in the regulation of a large spectrum of both general and specialized signaling pathways. Binds to a large number of partners, usually by recognition of a phosphoserine or phosphothreonine motif. Binding generally results in the modulation of the activity of the binding partner. Negatively regulates the kinase activity of PDPK1.
Abbreviation	Recombinant Human YWHAH protein, partial
Storage	The shelf life is related to many factors, storage state, buffer ingredients, storage temperature and the stability of the protein itself. Generally, the shelf life of liquid form is 6 months at -20°C/-80°C. The shelf life of lyophilized form is 12 months at -20°C/-80°C.
Uniprot No.	Q04917
Alias	Protein AS1
Product Type	Recombinant Protein
Immunogen Species	Homo sapiens (Human)
Purity	Greater than 90% as determined by SDS-PAGE.
Sequence	REQLLQRARLAEQAERYDDMASAMKAVTELNEPLSNEDRNLLSVAYKNVVGA RRSSWRVISSIEQKTMADGNEKKLEKVKAYREKIEKELETVCNDVLSLLDKFLIK NCNDFQYESKVFYLMKMGDYYRYLAEVASGEKKNSVVEASEAAYKEAFEISKE QMCPHTPIRLGLALNFSVFYIEIQNAPEQACLLAKQAFDDAIAELDTLNEDSYK DSTLIMQLLRDNLTLWTSDQQDEEAGEGN
Research Area	Signal Transduction
Source	E.coli
Target Names	YWHAH
Expression Region	4-246aa
Notes	Repeated freezing and thawing is not recommended. Store working aliquots at 4°C for up to one week.
Tag Info	N-terminal GST-tagged
Mol. Weight	54.9kDa
Protein Length	Partial
Image	



(Tris-Glycine gel) Discontinuous SDS-PAGE (reduced) with 5% enrichment gel and 15% separation gel.



Based on the SEQUEST from database of E.coli host and target protein, the LC-MS/MS Analysis result of CSB-RP021744h could indicate that this peptide derived from E.coli-expressed Homo sapiens (Human) YWHAAH.



Based on the SEQUEST from database of E.coli host and target protein, the LC-MS/MS Analysis result of CSB-RP021744h could indicate that this peptide derived from E.coli-expressed Homo sapiens (Human) YWHAAH.

Description

Explore the potential of our Recombinant Human YWHAAH protein, a critical component in signal transduction research. This protein is a partial variant of the 14-3-3 protein eta (Protein AS1) and is derived from the 4-246aa expression region of the human YWHAAH gene.

Sourced from E.coli, the protein comes with an N-terminal GST tag to facilitate purification and detection. Presented as a lyophilized powder, this Recombinant Human YWHAAH protein boasts a purity of greater than 90% as determined by SDS-PAGE, ensuring reliable performance in your research endeavors.

Reconstitution

We recommend that this vial be briefly centrifuged prior to opening to bring the contents to the bottom. Please reconstitute protein in deionized sterile water to a concentration of 0.1-1.0 mg/mL. We recommend to add 5-50% of glycerol (final concentration) and aliquot for long-term storage at -20°C/-80°C. Our default final concentration of glycerol is 50%. Customers could use it as reference.

Shelf Life

The shelf life is related to many factors, storage state, buffer ingredients, storage temperature and the stability of the protein itself. Generally, the shelf life of liquid form is 6 months at -20°C/-80°C. The shelf life of lyophilized form is 12 months at -20°C/-80°C.