



Recombinant Human Disintegrin and metalloproteinase domain-containing protein 15 (ADAM15), partial

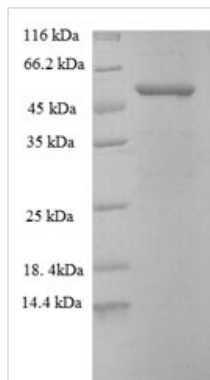
Product Code	CSB-RP019144h
Relevance	Active metalloproteinase with gelatinolytic and collagenolytic activity. Plays a role in the wound healing process. Mediates both heterotypic intraepithelial cell/T-cell interactions and homotypic T-cell aggregation. Inhibits beta-1 integrin-mediated cell adhesion and migration of airway smooth muscle cells. Suppresses cell motility on or towards fibronectin possibly by driving alpha-v/beta-1 integrin (ITAGV-ITGB1) cell surface expression via ERK1/2 inactivation. Cleaves E-cadherin in response to growth factor deprivation. Plays a role in glomerular cell migration. Plays a role in pathological neovascularization. May play a role in cartilage remodeling. May be proteolytically processed, during sperm epididymal maturation and the acrosome reaction. May play a role in sperm-egg binding through its disintegrin domain
Abbreviation	Recombinant Human ADAM15 protein, partial
Storage	The shelf life is related to many factors, storage state, buffer ingredients, storage temperature and the stability of the protein itself. Generally, the shelf life of liquid form is 6 months at -20°C/-80°C. The shelf life of lyophilized form is 12 months at -20°C/-80°C.
Uniprot No.	Q13444
Alias	Metalloprotease RGD disintegrin protein;Metalloproteinase-like, disintegrin-like, and cysteine-rich protein 15 ;MDC-15Metargidin
Product Type	Recombinant Protein
Immunogen Species	Homo sapiens (Human)
Purity	Greater than 90% as determined by SDS-PAGE.
Sequence	DVVTETKTVELVIVADHSEAQKYRDFQHLLNRTLEVALLLDTFFRPLNVRVALV GLEAWTQRDLVEISPNPAVTLENFLHWRRRAHLLPRLPHDSAQLVTGTSFSGPT VGMAIQNSICSPDFSGGVNMDHSTSILGVASSIAHELGHSLGLDHDLPGNSCP CPGPAPAKTCIMEASTDFLPGLNFSNCSRRALEKALLDGMGSCFLERLPSLPP MAAFCGNMFVEPGEQCDCGFLDDCVDPCCDSLT
Research Area	Cancer
Source	E.coli
Target Names	ADAM15
Expression Region	207-452aa
Notes	Repeated freezing and thawing is not recommended. Store working aliquots at 4°C for up to one week.
Tag Info	N-terminal GST-tagged



Mol. Weight 53.6kDa

Protein Length Extracellular Domain

Image



(Tris-Glycine gel) Discontinuous SDS-PAGE (reduced) with 5% enrichment gel and 15% separation gel.

Reconstitution

We recommend that this vial be briefly centrifuged prior to opening to bring the contents to the bottom. Please reconstitute protein in deionized sterile water to a concentration of 0.1-1.0 mg/mL. We recommend to add 5-50% of glycerol (final concentration) and aliquot for long-term storage at -20°C/-80°C. Our default final concentration of glycerol is 50%. Customers could use it as reference.

Shelf Life

The shelf life is related to many factors, storage state, buffer ingredients, storage temperature and the stability of the protein itself. Generally, the shelf life of liquid form is 6 months at -20°C/-80°C. The shelf life of lyophilized form is 12 months at -20°C/-80°C.