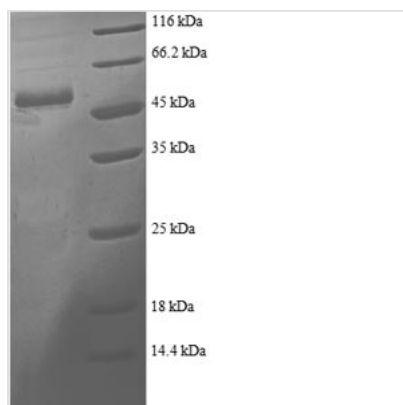




Recombinant Human Proteasome activator complex subunit 2 (PSME2)

Product Code	CSB-RP011344h
Relevance	Implicated in immunoproteasome assbly and required for efficient antigen processing. The PA28 activator complex enhances the generation of class I binding peptides by altering the cleavage pattern of the proteasome.
Abbreviation	Recombinant Human PSME2 protein
Storage	The shelf life is related to many factors, storage state, buffer ingredients, storage temperature and the stability of the protein itself. Generally, the shelf life of liquid form is 6 months at -20°C/-80°C. The shelf life of lyophilized form is 12 months at -20°C/-80°C.
Uniprot No.	Q9UL46
Alias	11S regulator complex subunit beta ;REG-betaActivator of multicatalytic protease subunit 2;Proteasome activator 28 subunit beta ;PA28b ;PA28beta
Product Type	Recombinant Protein
Immunogen Species	Homo sapiens (Human)
Purity	Greater than 90% as determined by SDS-PAGE.
Sequence	AKPCGVRLSGEARKQVEVFRQNLFFQEAEEFLYRFLPQKIIYLNQLLQEDSLNVA DLTSLRAPLDIIPDPPPKDDEMETDKQEKEVHKCGFLPGNEKVLALLALVKP EVWTLKEKCILVITWIKHLIPKIEDGNDGVAIQEKVLERNVAVKTKVEAFQTTIS KYFSERGDAAKASKETHVMDYRALVHERDEAAYGELRAMVLDLRAFYAELY HIISSNLEKIVNPKGEEKPSMY
Research Area	Cell Biology
Source	E.coli
Target Names	PSME2
Expression Region	2-239aa
Notes	Repeated freezing and thawing is not recommended. Store working aliquots at 4°C for up to one week.
Tag Info	N-terminal GST-tagged
Mol. Weight	54.3kDa
Protein Length	Full Length of Mature Protein
Image	



(Tris-Glycine gel) Discontinuous SDS-PAGE (reduced) with 5% enrichment gel and 15% separation gel.

Reconstitution

We recommend that this vial be briefly centrifuged prior to opening to bring the contents to the bottom. Please reconstitute protein in deionized sterile water to a concentration of 0.1-1.0 mg/mL. We recommend to add 5-50% of glycerol (final concentration) and aliquot for long-term storage at -20°C/-80°C. Our default final concentration of glycerol is 50%. Customers could use it as reference.

Shelf Life

The shelf life is related to many factors, storage state, buffer ingredients, storage temperature and the stability of the protein itself. Generally, the shelf life of liquid form is 6 months at -20°C/-80°C. The shelf life of lyophilized form is 12 months at -20°C/-80°C.