

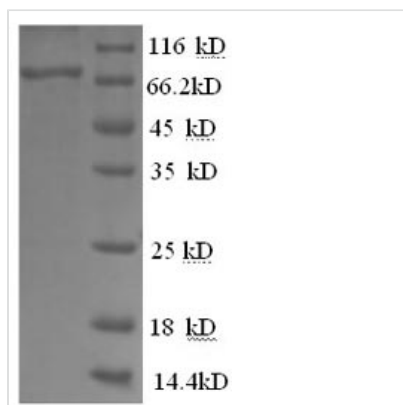


Recombinant Human Glucose-6-phosphate isomerase (GPI), partial

Product Code	CSB-RP003674h
Relevance	Besides it's role as a glycolytic enzyme, mammalian GPI can function as a tumor-secreted cytokine and an angiogenic factor (AMF) that stimulates endothelial cell motility. GPI is also a neurotrophic factor (Neuroleukin) for spinal and sensory neurons.
Abbreviation	Recombinant Human GPI protein, partial
Storage	The shelf life is related to many factors, storage state, buffer ingredients, storage temperature and the stability of the protein itself. Generally, the shelf life of liquid form is 6 months at -20°C/-80°C. The shelf life of lyophilized form is 12 months at -20°C/-80°C.
Uniprot No.	P06744
Alias	Autocrine motility factor ;AMFNeuroleukin ;NLKPhosphoglucose isomerase ;PGIPhosphohexose isomerase ;PHISperm antigen 36 ;SA-36
Product Type	Recombinant Protein
Immunogen Species	Homo sapiens (Human)
Purity	Greater than 90% as determined by SDS-PAGE.
Sequence	AALTRDPQFQKLQQWYREHRSELNLRRLFDANKDRFNHFSLTNTNHGHILVD YSKNLVTEDVMRMLVDLAKSRGVEAARERMFNGEKINYTEGRAVLHVALRNR SNTPILVGKDVMPEVNKVLDMKSFCQVRVSGDWKGYTGKTITDVINIGIGG SDLGPLMVTEALKPYSSGGPRVWYVSNIDGTHIAKTLAQLNPESLFIASKTFT TQETITNAETAKEWFLQAADPSAVAKHFVALSTNTTKVKEFGIDPQNMFEFW DWVGGRYSLWSAIGLSIALHVGFDNFEQLLSGAHWMDQHFRTTPLEKNAPVL LALLGIWYINCFGCETHAMLPYDQYLHRFAAYFQQGDMESNGKYITKSGTRVD HQTGPIVWGEPTNGQHAFYQLIHQGTKMIPCDFLIPVQTQHPHPIRKGLHHKILL ANFLAQTEALMRGKSTEEARKELQAAGKSPEDLERLLPHKVFEGNRPTNSIVF TKLTPFMLGALVAMYEHKIFVQGIWDINSFDQWGVELGKQLAKKIEPELDGSA QVTSHDASTNGLINFIKQQR
Research Area	Signal Transduction
Source	E.coli
Target Names	GPI
Expression Region	2-554aa
Notes	Repeated freezing and thawing is not recommended. Store working aliquots at 4°C for up to one week.
Tag Info	N-terminal 6xHis-tagged
Mol. Weight	66.6kDa
Protein Length	Partial



Image



(Tris-Glycine gel) Discontinuous SDS-PAGE (reduced) with 5% enrichment gel and 15% separation gel.

Description

The recombinant Human GPI protein synthesis in e.coli cells necessitates the incorporation of a DNA fragment encoding the Human GPI protein (2-554aa) into a plasmid vector, followed by the transformation of this vector into e.coli cells. After screening for positive cells, they are cultured and induced to express the GPI protein. The protein carries a N-terminal 6xHis tag. Cell lysis is performed to gather the recombinant Human GPI protein, which undergoes affinity purification and is then analyzed using SDS-PAGE and subsequent staining of the gel with Coomassie Brilliant Blue. The purity of the resulting recombinant Human GPI protein reaches up to 90%.

Reconstitution

We recommend that this vial be briefly centrifuged prior to opening to bring the contents to the bottom. Please reconstitute protein in deionized sterile water to a concentration of 0.1-1.0 mg/mL. We recommend to add 5-50% of glycerol (final concentration) and aliquot for long-term storage at -20°C/-80°C. Our default final concentration of glycerol is 50%. Customers could use it as reference.

Shelf Life

The shelf life is related to many factors, storage state, buffer ingredients, storage temperature and the stability of the protein itself. Generally, the shelf life of liquid form is 6 months at -20°C/-80°C. The shelf life of lyophilized form is 12 months at -20°C/-80°C.