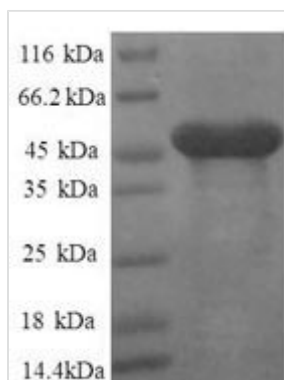




Recombinant Human 60S ribosomal protein L11 (RPL11), partial

Product Code	CSB-RP000654h
Relevance	Binds to 5S ribosomal RNA . Required for rRNA maturation and formation of the 60S ribosomal subunits. Promotes nucleolar location of PML .
Abbreviation	Recombinant Human RPL11 protein, partial
Storage	The shelf life is related to many factors, storage state, buffer ingredients, storage temperature and the stability of the protein itself. Generally, the shelf life of liquid form is 6 months at -20°C/-80°C. The shelf life of lyophilized form is 12 months at -20°C/-80°C.
Uniprot No.	P62913
Alias	CLL-associated antigen KW-12
Product Type	Recombinant Protein
Immunogen Species	Homo sapiens (Human)
Purity	Greater than 90% as determined by SDS-PAGE.
Sequence	QDQGEKENPMRELRIKRLCLNICVGESGDRLTRAAKVLEQLTGQTPVFSKARY TVRSFGIRRNEKIAVHCTVRGAKAEIEILEKGLKVREYELRKNNFSDTGNGFGFI QEHIDLGIKYDPSIGIYGLDFYVVLGRPGFSIADKKRRTGCIGAKHRISKEEAMR WFQQKYDGIILPGK
Research Area	Cell Cycle
Source	E.coli
Target Names	RPL11
Expression Region	3-178aa
Notes	Repeated freezing and thawing is not recommended. Store working aliquots at 4°C for up to one week.
Tag Info	N-terminal GST-tagged
Mol. Weight	47.1kDa
Protein Length	Partial
Image	



(Tris-Glycine gel) Discontinuous SDS-PAGE (reduced) with 5% enrichment gel and 15% separation gel.

Reconstitution

We recommend that this vial be briefly centrifuged prior to opening to bring the contents to the bottom. Please reconstitute protein in deionized sterile water to a concentration of 0.1-1.0 mg/mL. We recommend to add 5-50% of glycerol (final concentration) and aliquot for long-term storage at -20°C/-80°C. Our default final concentration of glycerol is 50%. Customers could use it as reference.

Shelf Life

The shelf life is related to many factors, storage state, buffer ingredients, storage temperature and the stability of the protein itself. Generally, the shelf life of liquid form is 6 months at -20°C/-80°C. The shelf life of lyophilized form is 12 months at -20°C/-80°C.