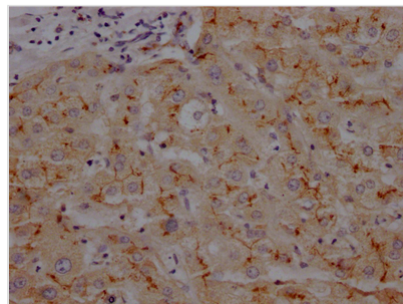




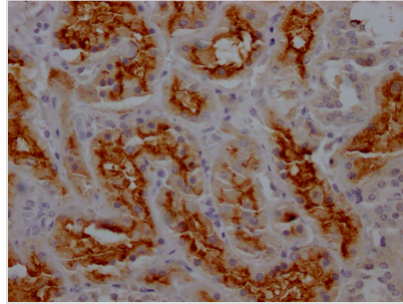
ANPEP Antibody

Product Code	CSB-RA993633A0HU
Storage	Upon receipt, store at -20°C or -80°C. Avoid repeated freeze.
Uniprot No.	P15144
Immunogen	A synthesized peptide derived from human CD13
Species Reactivity	Human
Tested Applications	ELISA, IHC; Recommended dilution: IHC:1:50-1:200
Relevance	Broad specificity aminopeptidase which plays a role in the final digestion of peptides generated from hydrolysis of proteins by gastric and pancreatic proteases. Also involved in the processing of various peptides including peptide hormones, such as angiotensin III and IV, neuropeptides, and chemokines. May also be involved the cleavage of peptides bound to major histocompatibility complex class II molecules of antigen presenting cells. May have a role in angiogenesis and promote cholesterol crystallization.
Form	Liquid
Conjugate	Non-conjugated
Storage Buffer	Rabbit IgG in phosphate buffered saline, pH 7.4, 150mM NaCl, 0.02% sodium azide and 50% glycerol.
Purification Method	Affinity-chromatography
Isotype	Rabbit IgG
Clonality	Monoclonal
Product Type	Recombinant Antibody
Immunogen Species	Homo sapiens (Human)
Research Area	Immunology; Stem cells
Gene Names	ANPEP
Accession NO.	6E9

Image



IHC image of CSB-RA993633A0HU diluted at 1:100 and staining in paraffin-embedded human liver tissue performed on a Leica Bond™ system. After dewaxing and hydration, antigen retrieval was mediated by high pressure in a citrate buffer (pH 6.0). Section was blocked with 10% normal goat serum 30min at RT. Then primary antibody (1% BSA) was incubated at 4°C overnight. The primary is detected by a Goat anti-rabbit IgG polymer labeled by HRP and visualized using 0.05% DAB.



IHC image of CSB-RA993633A0HU diluted at 1:100 and staining in paraffin-embedded human kidney tissue performed on a Leica Bond™ system. After dewaxing and hydration, antigen retrieval was mediated by high pressure in a citrate buffer (pH 6.0). Section was blocked with 10% normal goat serum 30min at RT. Then primary antibody (1% BSA) was incubated at 4°C overnight. The primary is detected by a Goat anti-rabbit IgG polymer labeled by HRP and visualized using 0.05% DAB.

Description

The generation of this recombinant ANPEP antibody occurs in a series of steps: immunization, splenocytes & PBMC, single B cell sorting, mRNA extraction, RT-PCR & insert vector, expression, ELISA validation. And ELISA, IHC was carried out. Every step was performed under strict standards to ensure the researchers can have a recombinant ANPEP antibody with premium quality.

ANPEP is a zinc-dependent metallopeptidase that hydrolyzes the N terminus of biological peptides and extracellular matrix proteins. In mammals, ANPEP is involved in various cellular processes, such as pain perception, blood pressure modulation, tumor angiogenesis, and metastasis, immune cell chemotaxis, sperm motility, cell-cell adhesion, and coronavirus entry. ANPEP is a target for cancer therapies due to its involvement in tumor cell expansion and motility. Small molecule drugs that bind to the active site of ANPEP impede catalysis and slow tumor growth. ANPEP is also a significant coronavirus cell entrance receptor that binds to a region distant from the active site.