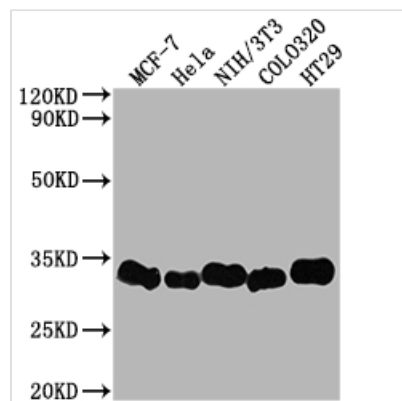




LGALS3 Antibody

Product Code	CSB-RA970289A0HU
Storage	Upon receipt, store at -20°C or -80°C. Avoid repeated freeze.
Uniprot No.	P17931
Immunogen	A synthesized peptide derived from human Galectin 3
Species Reactivity	Human
Tested Applications	ELISA, WB, IHC, IF, IP; Recommended dilution: WB:1:500-1:5000, IHC:1:50-1:200, IF:1:20-1:200, IP:1:200-1:1000
Relevance	Galactose-specific lectin which binds IgE. May mediate with the alpha-3, beta-1 integrin the stimulation by CSPG4 of endothelial cells migration. Together with DMBT1, required for terminal differentiation of columnar epithelial cells during early embryogenesis (By similarity). In the nucleus: acts as a pre-mRNA splicing factor. Involved in acute inflammatory responses including neutrophil activation and adhesion, chemoattraction of monocytes macrophages, opsonization of apoptotic neutrophils, and activation of mast cells.
Form	Liquid
Conjugate	Non-conjugated
Storage Buffer	Rabbit IgG in phosphate buffered saline, pH 7.4, 150mM NaCl, 0.02% sodium azide and 50% glycerol.
Purification Method	Affinity-chromatography
Isotype	Rabbit IgG
Clonality	Monoclonal
Product Type	Recombinant Antibody
Immunogen Species	Homo sapiens (Human)
Research Area	Neuroscience; Cell biology
Gene Names	LGALS3
Accession NO.	4E1

Image



Western Blot

Positive WB detected in: MCF-7 whole cell lysate, HeLa whole cell lysate, NIH/3T3 whole cell lysate, Colo320 whole cell lysate, HT29 whole cell lysate

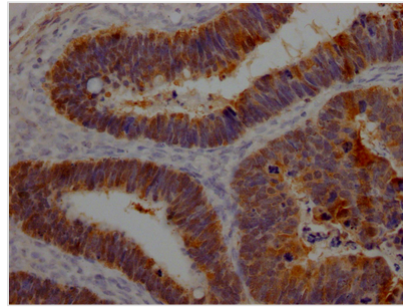
All lanes: Galectin 3 antibody at 1:2000

Secondary

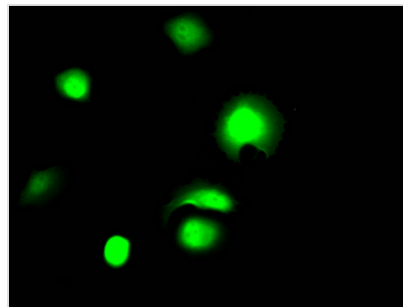
Goat polyclonal to rabbit IgG at 1/50000 dilution

Predicted band size: 27 kDa

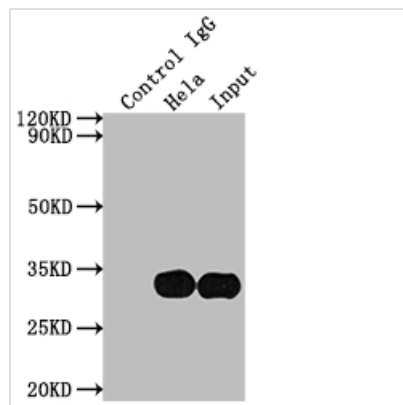
Observed band size: 31 kDa



IHC image of CSB-RA970289A0HU diluted at 1:100 and staining in paraffin-embedded human ovarian cancer performed on a Leica Bond™ system. After dewaxing and hydration, antigen retrieval was mediated by high pressure in a citrate buffer (pH 6.0). Section was blocked with 10% normal goat serum 30min at RT. Then primary antibody (1% BSA) was incubated at 4°C overnight. The primary is detected by a Goat anti-rabbit IgG polymer labeled by HRP and visualized using 0.05% DAB.



Immunofluorescence staining of MCF7 Cells with CSB-RA970289A0HU at 1:50, counter-stained with DAPI. The cells were fixed in 4% formaldehyde, permeated by 0.2% TritonX-100, and blocked in 10% normal Goat Serum. The cells were then incubated with the antibody overnight at 4°C. Nuclear DNA was labeled in blue with DAPI. The secondary antibody was FITC-conjugated AffiniPure Goat Anti-Rabbit IgG (H+L).



Immunoprecipitating LGALS3 in HeLa whole cell lysate
 Lane 1: Rabbit control IgG instead of CSB-RA970289A0HU in HeLa whole cell lysate. For western blotting, a HRP-conjugated Protein G antibody was used as the secondary antibody (1/2000)
 Lane 2: CSB-RA970289A0HU(2µg)+ HeLa whole cell lysate(500µg)
 Lane 3: HeLa whole cell lysate (10µg)

Description

LGALS3 is a beta-galactoside binding protein that has antibacterial and fungal action. It plays a role in cell adhesion, cell activation and chemoattraction, cell growth and differentiation, cell cycle, and apoptosis, among other biological processes. LGALS3 mutations have a direct impact on the extracellular matrix (ECM) and cell communication, and they play a role in carcinogenesis at various stages. Increased LGALS3 expression promotes tumor development, invasiveness, metastatic potential, and immune suppression as cancer progresses.

The recombinant LGALS3 antibody was generated in vitro through inserting cloned LGALS3 genes into expression vectors. The expression vector was then inserted into a mammalian cell to express this LGALS3 antibody. It has been validated in ELISA, WB, IHC, IF, IP. Every step in the production was controlled strictly. You have no worries about the quality.