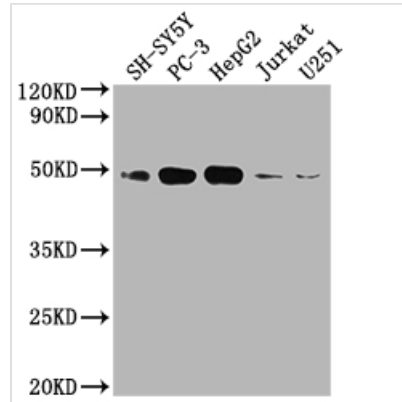




S1PR1 Antibody

Product Code	CSB-RA923827A0HU
Storage	Upon receipt, store at -20°C or -80°C. Avoid repeated freeze.
Uniprot No.	P21453
Immunogen	A synthesized peptide derived from human EDG1
Species Reactivity	Human
Tested Applications	ELISA, WB; Recommended dilution: WB:1:500-1:5000
Relevance	<p>G-protein coupled receptor for the bioactive lysosphingolipid sphingosine 1-phosphate (S1P) that seems to be coupled to the G(i) subclass of heteromeric G proteins. Signaling leads to the activation of RAC1, SRC, PTK2/FAK1 and MAP kinases. Plays an important role in cell migration, probably via its role in the reorganization of the actin cytoskeleton and the formation of lamellipodia in response to stimuli that increase the activity of the sphingosine kinase SPHK1. Required for normal chemotaxis toward sphingosine 1-phosphate. Required for normal embryonic heart development and normal cardiac morphogenesis. Plays an important role in the regulation of sprouting angiogenesis and vascular maturation. Inhibits sprouting angiogenesis to prevent excessive sprouting during blood vessel development. Required for normal egress of mature T-cells from the thymus into the blood stream and into peripheral lymphoid organs. Plays a role in the migration of osteoclast precursor cells, the regulation of bone mineralization and bone homeostasis (By similarity). Plays a role in responses to oxidized 1-palmitoyl-2-arachidonoyl-sn-glycero-3-phosphocholine by pulmonary endothelial cells and in the protection against ventilator-induced lung injury.</p>
Form	Liquid
Conjugate	Non-conjugated
Storage Buffer	Rabbit IgG in phosphate buffered saline, pH 7.4, 150mM NaCl, 0.02% sodium azide and 50% glycerol.
Purification Method	Affinity-chromatography
Isotype	Rabbit IgG
Clonality	Monoclonal
Product Type	Recombinant Antibody
Immunogen Species	Homo sapiens (Human)
Research Area	Cancer; Cardiovascular; Cell biology; Signal transduction
Gene Names	S1PR1
Accession NO.	4F2
Image	


Western Blot

Positive WB detected in: SH-SY5Y whole cell lysate, PC3 whole cell lysate, HepG2 whole cell lysate, Jurkat whole cell lysate, U251 whole cell lysate

All lanes: EDG1 antibody at 1:2000

Secondary

Goat polyclonal to rabbit IgG at 1/50000 dilution

Predicted band size: 43 kDa

Observed band size: 43 kDa

Description

S1PR1 is one of the key players in osteoimmunology due to its regulation of both the immune system and bone remodeling. S1PR1 interacts with $G\alpha_i$ after being activated by S1P, which modulates downstream signaling pathways such as PLC, PI3K, RAS-ERK, STAT, and NF-kappa B, which are involved in cancer cell growth, proliferation, migration, and invasion. The S1PR1-S1P axis is also involved in immune cell chemotaxis, activation, differentiation, and function. The role of S1P-S1PR1 signaling in bone remodeling can directly target both osteoclastogenesis and osteogenesis.

The recombinant S1PR1 antibody was generated in vitro through inserting cloned S1PR1 genes into expression vectors. The expression vector was then inserted into a mammalian cell to express this S1PR1 antibody. It has been validated in ELISA, WB. Every step in the production was controlled strictly. You have no worries about the quality.