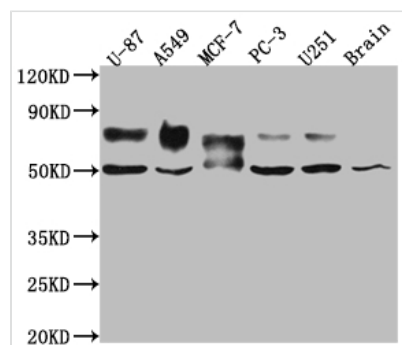




# TPBG Antibody

<b>Product Code</b>	CSB-RA902876A0HU
<b>Storage</b>	Upon receipt, store at -20°C or -80°C. Avoid repeated freeze.
<b>Uniprot No.</b>	Q13641
<b>Immunogen</b>	A synthesized peptide derived from human 5T4
<b>Species Reactivity</b>	Human, Mouse
<b>Tested Applications</b>	ELISA, WB, IHC; Recommended dilution: WB:1:500-1:5000, IHC:1:50-1:200
<b>Relevance</b>	May function as an inhibitor of Wnt/beta-catenin signaling by indirectly interacting with LRP6 and blocking Wnt3a-dependent LRP6 internalization.
<b>Form</b>	Liquid
<b>Conjugate</b>	Non-conjugated
<b>Storage Buffer</b>	Rabbit IgG in phosphate buffered saline, pH 7.4, 150mM NaCl, 0.02% sodium azide and 50% glycerol.
<b>Purification Method</b>	Affinity-chromatography
<b>Isotype</b>	Rabbit IgG
<b>Clonality</b>	Monoclonal
<b>Product Type</b>	Recombinant Antibody
<b>Immunogen Species</b>	Homo sapiens (Human)
<b>Research Area</b>	Cancer; Developmental biology; Immunology; Stem cells
<b>Gene Names</b>	TPBG
<b>Accession NO.</b>	6E9

## Image



### Western Blot

Positive WB detected in: U-87 whole cell lysate, A549 whole cell lysate, MCF-7 whole cell lysate, PC-3 whole cell lysate, U-251 whole cell lysate, Mouse Brain whole cell lysate

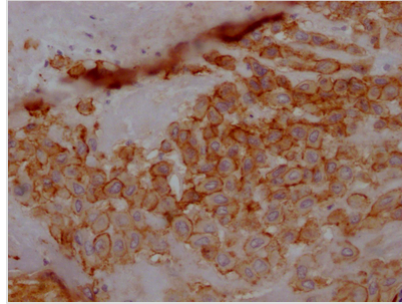
All lanes: 5T4 antibody at 1:1000

Secondary

Goat polyclonal to rabbit IgG at 1/50000 dilution

Predicted band size: 47 kDa

Observed band size: 50, 80 kDa



IHC image of CSB-RA902876A0HU diluted at 1:100 and staining in paraffin-embedded human placenta tissue performed on a Leica Bond™ system. After dewaxing and hydration, antigen retrieval was mediated by high pressure in a citrate buffer (pH 6.0). Section was blocked with 10% normal goat serum 30min at RT. Then primary antibody (1% BSA) was incubated at 4°C overnight. The primary is detected by a Goat anti-rabbit IgG polymer labeled by HRP and visualized using 0.05% DAB.

## Description

The TPBG recombinant monoclonal antibody is a highly specific anti-TPBG antibody. This TPBG antibody was produced by inserting the DNA sequence encoding the TPBG monoclonal antibody into plasmids and then transfecting the plasmids into cell lines for expression. Its isotype is identical to rabbit IgG. This TPBG antibody detects the TPBG protein in human and mouse samples and can be used in ELISA, WB, and IHC.

TPBG, an oncofetal antigen, is low expressed in normal tissues but upregulated in a variety of human cancers. High expression of TPBG usually indicates a poor clinical outcome. Jeong-Eun Yoo et. al has found that TPBG is an efficient sorting marker for ventral mesencephalic dopaminergic precursors originated from human pluripotent stem cells.