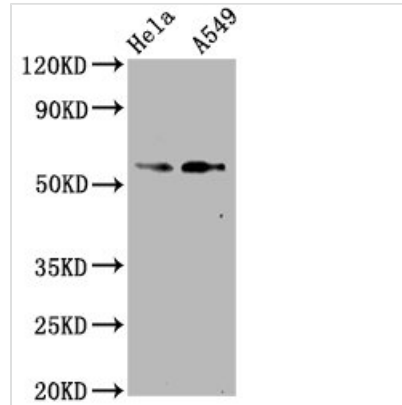




Phospho-SMAD2 (S250) Antibody

Product Code	CSB-RA618017A250phHU
Abbreviation	Mothers against decapentaplegic homolog 2
Storage	Upon receipt, store at -20°C or -80°C. Avoid repeated freeze.
Uniprot No.	Q15796
Immunogen	A synthesized peptide derived from Human Phospho-SMAD2 (S250)
Species Reactivity	Human
Tested Applications	ELISA, WB; Recommended dilution: WB:1:500-1:5000
Relevance	Receptor-regulated SMAD (R-SMAD) that is an intracellular signal transducer and transcriptional modulator activated by TGF-beta (transforming growth factor) and activin type 1 receptor kinases. Binds the TRE element in the promoter region of many genes that are regulated by TGF-beta and, on formation of the SMAD2/SMAD4 complex, activates transcription. May act as a tumor suppressor in colorectal carcinoma. Positively regulates PDPK1 kinase activity by stimulating its dissociation from the 14-3-3 protein YWHAQ which acts as a negative regulator.
Form	Liquid
Conjugate	Non-conjugated
Storage Buffer	Rabbit IgG in phosphate buffered saline , pH 7.4, 150mM NaCl, 0.02% sodium azide and 50% glycerol.
Purification Method	Affinity-chromatography
Isotype	Rabbit IgG
Clonality	Monoclonal
Alias	Mothers against decapentaplegic homolog 2, MAD homolog 2, Mothers against DPP homolog 2, JV18-1, Mad-related protein 2, hMAD-2, SMAD family member 2, SMAD 2, Smad2, hSMAD2, SMAD2, MADH2, MADR2
Immunogen Species	Homo sapiens (Human)
Research Area	Signal Transduction
Gene Names	SMAD2
Accession NO.	4D12
Image	


Western Blot

Positive WB detected in HeLa whole cell lysate, A549 whole cell lysate

All lanes Phospho-SMAD2 antibody at 1.07 μ g/ml

Secondary

Goat polyclonal to rabbit IgG at 1/50000 dilution

Predicted band size: 58 KDa

Observed band size: 58 KDa

Description

This ser 250-specifically phosphorylated SMAD2 antibody CSB-RA618017A250phHU is a recombinant monoclonal antibody produced from the expression of the plasmids that were constructed by the phospho-SMAD2 (S250) monoclonal antibody (generated from animals with the human pS250-SMAD2 immunization) DNA sequence in cell lines. The anti-pS250-SMAD2 antibody was purified through affinity- chromatography method. It is a rabbit IgG antibody. It reacts with the human SMAD2 phosphorylated at Ser 250 residue. And it is recommended for ELISA and WB analyses.

SMAD proteins are an integral part of the TGF- β signaling pathway. Following ligand engagement, the type-II TGF- β receptor (TRII) phosphorylates the type-I TGF- β receptor (TRI), which phosphorylates and activates the SMAD2 and SMAD3 receptors. In human embryonic stem cells, SMAD2/3 is involved in pluripotency maintenance and differentiation initiation (hESCs).