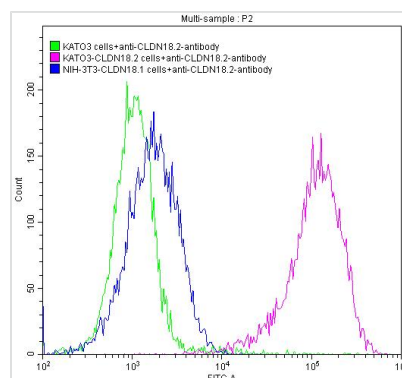




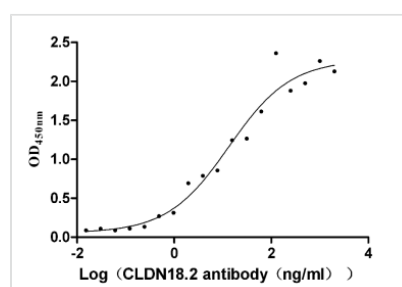
# Claudin-18.2 Monoclonal Antibody

<b>Product Code</b>	CSB-RA005498A1HU
<b>Storage</b>	Upon receipt, store at -20°C or -80°C. Avoid repeated freeze.
<b>Uniprot No.</b>	P56856-2
<b>Immunogen</b>	Recombinant Human Claudin-18.2 protein
<b>Species Reactivity</b>	Human
<b>Tested Applications</b>	ELISA, FC; Recommended dilution: FC:1:50-1:200
<b>Form</b>	Liquid
<b>Conjugate</b>	Non-conjugated
<b>Storage Buffer</b>	Preservative: 0.03% Proclin 300 Constituents: 50% Glycerol, 0.01M PBS, PH 7.4
<b>Purification Method</b>	Affinity-chromatography
<b>Isotype</b>	hIgG1
<b>Clonality</b>	Monoclonal
<b>Product Type</b>	Recombinant Antibody
<b>Immunogen Species</b>	Homo sapiens (Human)
<b>Research Area</b>	Signal transduction
<b>Gene Names</b>	CLDN18
<b>Accession NO.</b>	9C2

## Image



Untransfected KATO3 cells (green line), transfected Human CLDN18.2 KATO3 stable cells (red line) and transfected Human CLDN18.1 NIH-3T3 stable cells (blue line) were stained with anti-CLDN18.2 antibody ( $2\mu\text{g}/1 \times 10^6$  cells), washed and then followed by FITC-conjugated Goat Anti-Human IgG, Fc $\gamma$  antibody (CSB-PA271513) and analyzed with flow cytometry.



The Binding Activity of Human CLDN18.2 with Anti-CLDN18.2 recombinant antibody. Activity: Measured by its binding ability in a functional ELISA. Immobilized Human CLDN18.2 (CSB-MP005498HU(A5)) at  $5\mu\text{g}/\text{mL}$  can bind Anti-CLDN18.2 recombinant antibody, the  $\text{EC}_{50}$  is 6.554-27.87 ng/mL.