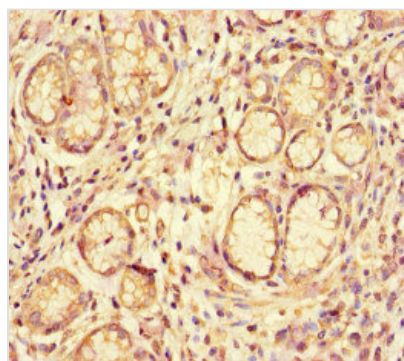




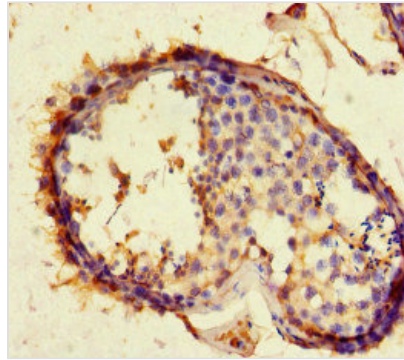
# ACE2 Antibody

<b>Product Code</b>	CSB-PA866317LA01HU
<b>Abbreviation</b>	Angiotensin-converting enzyme 2
<b>Storage</b>	Upon receipt, store at -20°C or -80°C. Avoid repeated freeze.
<b>Uniprot No.</b>	Q9BYF1
<b>Immunogen</b>	Recombinant Human Angiotensin-converting enzyme 2 protein (395-638AA)
<b>Raised In</b>	Rabbit
<b>Species Reactivity</b>	Human
<b>Tested Applications</b>	ELISA, IHC, IF; Recommended dilution: IHC:1:20-1:200, IF:1:50-1:200
<b>Relevance</b>	Carboxypeptidase which converts angiotensin I to angiotensin 1-9, a peptide of unknown function, and angiotensin II to angiotensin 1-7, a vasodilator. Also able to hydrolyze apelin-13 and dynorphin-13 with high efficiency. May be an important regulator of heart function.
<b>Form</b>	Liquid
<b>Conjugate</b>	Non-conjugated
<b>Storage Buffer</b>	Preservative: 0.03% Proclin 300 Constituents: 50% Glycerol, 0.01M PBS, PH 7.4
<b>Purification Method</b>	>95%, Protein G purified
<b>Isotype</b>	IgG
<b>Clonality</b>	Polyclonal
<b>Alias</b>	Angiotensin-converting enzyme 2 (EC 3.4.17.23) (ACE-related carboxypeptidase) (Angiotensin-converting enzyme homolog) (ACEH) (Metalloprotease MPROT15) [Cleaved into: Processed angiotensin-converting enzyme 2], ACE2
<b>Species</b>	Homo sapiens (Human)
<b>Research Area</b>	Cell Biology
<b>Target Names</b>	ACE2

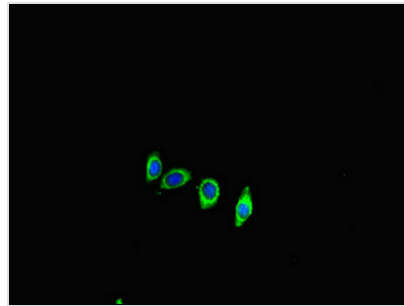
## Image



Immunohistochemistry of paraffin-embedded human gastric cancer using CSB-PA866317LA01HU at dilution of 1:100



Immunohistochemistry of paraffin-embedded human testis tissue using CSB-PA866317LA01HU at dilution of 1:100



Immunofluorescent analysis of HepG2 cells using CSB-PA866317LA01HU at dilution of 1:100 and Alexa Fluor 488-conjugated AffiniPure Goat Anti-Rabbit IgG(H+L)