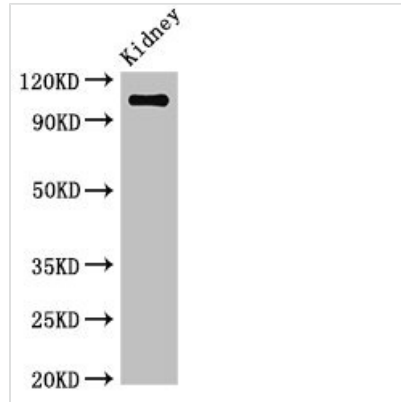




ANPEP Antibody

Product Code	CSB-PA001827LA01HU
Abbreviation	Aminopeptidase N
Storage	Upon receipt, store at -20°C or -80°C. Avoid repeated freeze.
Uniprot No.	P15144
Immunogen	Recombinant Human Aminopeptidase N protein (34-219AA)
Raised In	Rabbit
Species Reactivity	Human, Mouse
Tested Applications	ELISA, WB, IHC, IF; Recommended dilution: WB:1:500-1:5000, IHC:1:20-1:200, IF:1:50-1:200
Relevance	<p>Broad specificity aminopeptidase. Plays a role in the final digestion of peptides generated from hydrolysis of proteins by gastric and pancreatic proteases. May play a critical role in the pathogenesis of cholesterol gallstone disease. May be involved in the metabolism of regulatory peptides of diverse cell types, responsible for the processing of peptide hormones, such as angiotensin III and IV, neuropeptides, and chemokines. Found to cleave antigen peptides bound to major histocompatibility complex class II molecules of presenting cells and to degrade neurotransmitters at synaptic junctions. Is also implicated as a regulator of IL-8 bioavailability in the endometrium, and therefore may contribute to the regulation of angiogenesis. Is used as a marker for acute myeloid leukemia and plays a role in tumor invasion. In case of human coronavirus 229E (HCoV-229E) infection, serves as receptor for HCoV-229E spike glycoprotein. Mediates as well human cytomegalovirus (HCMV) infection.</p>
Form	Liquid
Conjugate	Non-conjugated
Storage Buffer	Preservative: 0.03% Proclin 300 Constituents: 50% Glycerol, 0.01M PBS, pH 7.4
Purification Method	>95%, Protein G purified
Isotype	IgG
Clonality	Polyclonal
Alias	Aminopeptidase N (AP-N) (hAPN) (EC 3.4.11.2) (Alanyl aminopeptidase) (Aminopeptidase M) (AP-M) (Microsomal aminopeptidase) (Myeloid plasma membrane glycoprotein CD13) (gp150) (CD antigen CD13), ANPEP, APN CD13 PEPN
Species	Homo sapiens (Human)
Research Area	Immunology
Target Names	ANPEP
Image	

**Western Blot**

Positive WB detected in: Mouse kidney tissue

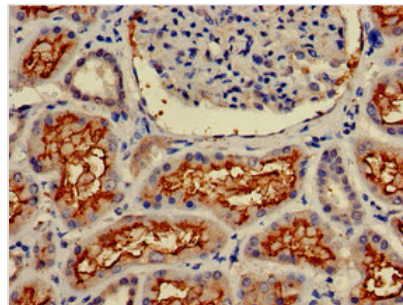
All lanes: ANPEP antibody at 3.4µg/ml

Secondary

Goat polyclonal to rabbit IgG at 1/50000 dilution

Predicted band size: 110 kDa

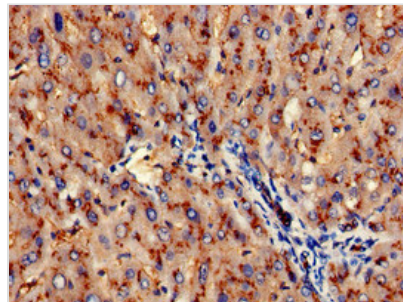
Observed band size: 110 kDa



Immunohistochemistry of paraffin-embedded

human kidney tissue using CSB-

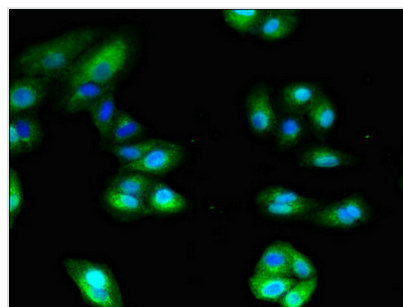
PA001827LA01HU at dilution of 1:100



Immunohistochemistry of paraffin-embedded

human liver tissue using CSB-

PA001827LA01HU at dilution of 1:100



Immunofluorescent analysis of HepG2 cells

using CSB-PA001827LA01HU at dilution of

1:100 and Alexa Fluor 488-conjugated

AffiniPure Goat Anti-Rabbit IgG(H+L)