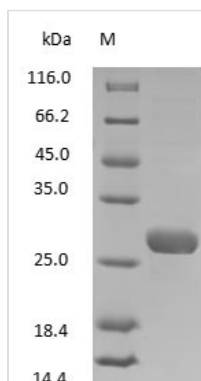




# Rabbit IgG Fab fragment

<b>Product Code</b>	CSB-NP005101Rb
<b>Relevance</b>	The fragment antigen-binding (Fab fragment) is a region on an antibody that binds to antigens. It is composed of one constant and one variable domain of each of the heavy and the light chain. These domains shape the paratope — the antigen-binding site — at the amino terminal end of the monomer. The two variable domains bind the epitope on their specific antigens.
<b>Storage</b>	Aliquot and store at -20°C or -80°C. Avoid repeated freeze/thaw cycles.
<b>Tested Applications</b>	ELISA, WB, SDS-PAGE
<b>Form</b>	Liquid
<b>Storage Buffer</b>	PBS, pH 7.4
<b>Alias</b>	Fragment antigen-binding
<b>Product Type</b>	Native Protein
<b>Sensitivity</b>	Not test
<b>Purity</b>	>95% (SDS-PAGE)
<b>Sequence</b>	Full length protein
<b>Research Area</b>	Immunology
<b>Source</b>	Rabbit serum IgG
<b>Protein Names</b>	Rabbit IgG Fab fragment

## Image



(Tris-Glycine gel) Discontinuous SDS-PAGE (reduced) with 5% enrichment gel and 15% separation gel.