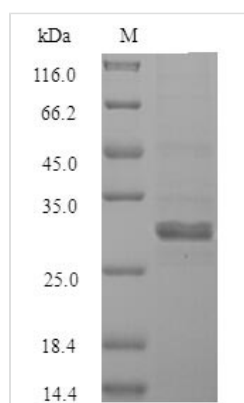




Recombinant Human Sal-like protein 2 (SALL2), partial

Product Code	CSB-MP896719HU
Relevance	Probable transcription factor that plays a role in eye development before, during, and after optic fissure closure.
Abbreviation	Recombinant Human SALL2 protein, partial
Storage	The shelf life is related to many factors, storage state, buffer ingredients, storage temperature and the stability of the protein itself. Generally, the shelf life of liquid form is 6 months at -20°C/-80°C. The shelf life of lyophilized form is 12 months at -20°C/-80°C.
Uniprot No.	Q9Y467
Product Type	Recombinant Proteins
Immunogen Species	Homo sapiens (Human)
Purity	Greater than 90% as determined by SDS-PAGE.
Sequence	MSRRKQRKPQQLISDCEGPSASENGDASEEDHPQVCAKCCAQFTDPTEFLAH QNACSTDPPVMVIIGGQENPNNSSASSEPRPEGHNNPQVMDTEHSNPPDSG SSVPTDPTWGPERRGEESPGHFLVAATGTAAGGGGGLILASPKLGATPLPPE STPAPPPPPPPPPPGVSGHNLNILEELRVLQQRQIHQMQ
Research Area	Epigenetics and Nuclear Signaling
Source	Mammalian cell
Target Names	SALL2
Expression Region	1-198aa
Notes	Repeated freezing and thawing is not recommended. Store working aliquots at 4°C for up to one week.
Tag Info	N-terminal Flag-Myc-tagged
Mol. Weight	25.3 kDa
Protein Length	Partial

Image



(Tris-Glycine gel) Discontinuous SDS-PAGE (reduced) with 5% enrichment gel and 15% separation gel.



Shelf Life

The shelf life is related to many factors, storage state, buffer ingredients, storage temperature and the stability of the protein itself.

Generally, the shelf life of liquid form is 6 months at -20°C/-80°C. The shelf life of lyophilized form is 12 months at -20°C/-80°C.