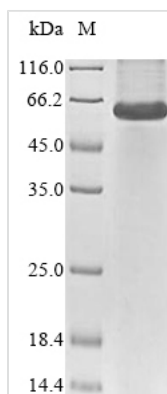




Recombinant Human Cysteine-rich secretory protein LCCL domain-containing 2 (CRISPLD2)

Product Code	CSB-MP884430HU
Abbreviation	Recombinant Human CRISPLD2 protein
Storage	The shelf life is related to many factors, storage state, buffer ingredients, storage temperature and the stability of the protein itself. Generally, the shelf life of liquid form is 6 months at -20°C/-80°C. The shelf life of lyophilized form is 12 months at -20°C/-80°C.
Uniprot No.	Q9H0B8
Product Type	Recombinant Proteins
Immunogen Species	Homo sapiens (Human)
Purity	Greater than 85% as determined by SDS-PAGE.
Sequence	YLLPNVTLLLEELLSKYQHNEHSRVRRAIPREDKEEILMLHNKLRGQVQPQAS NMEYMTWDDELEKSAAAWASQCIWEHGPTSLLVSIGQNLGAHWGRYRSPGF HVQSWYDEVKDYTPYPSECNPWCPCRCGPMCTHYTQIVWATTNKIGCAV NTRKMTVWGEVWENAVYFVCNYSKGNWIGEAPYKNGRPCSECPPSYGG SCRNNLCYREETYTPKETDEMNEVETAPIPEENHVWLQPRVMRPTKPKKTS AVNYMTQVVRCDTKMKDRCKGSTCNRYQCPAGCLNHKAKIFGTLFYESSSSI CRAAIHYGILDDKGGLVDITRNGKVPFFVKSERHGVQSLSKYPSSSFMVSKV KVQDLDCYTTVAQLCPFEPATHCPRIHCPAHCKDEPSYWAPVFGTNIYADTS SICKTAVHAGVISNESGGDVDVMPVDKKKTYVGSRLRNGVQSESLGTPRDGKA FRIFAVRQ
Research Area	Signal Transduction
Source	Mammalian cell
Target Names	CRISPLD2
Protein Names	Recommended name: Cysteine-rich secretory protein LCCL domain-containing 2 Alternative name(s): Cysteine-rich secretory protein 11 Short name= CRISP-11 LCCL domain-containing cysteine-rich secretory protein 2
Expression Region	23-497a
Notes	Repeated freezing and thawing is not recommended. Store working aliquots at 4°C for up to one week.
Tag Info	N-terminal 10xHis-tagged and C-terminal Myc-tagged
Mol. Weight	58.8
Protein Length	Full Length of Mature Protein
Image	



(Tris-Glycine gel) Discontinuous SDS-PAGE (reduced) with 5% enrichment gel and 15% separation gel.

Shelf Life

The shelf life is related to many factors, storage state, buffer ingredients, storage temperature and the stability of the protein itself. Generally, the shelf life of liquid form is 6 months at -20°C/-80°C. The shelf life of lyophilized form is 12 months at -20°C/-80°C.