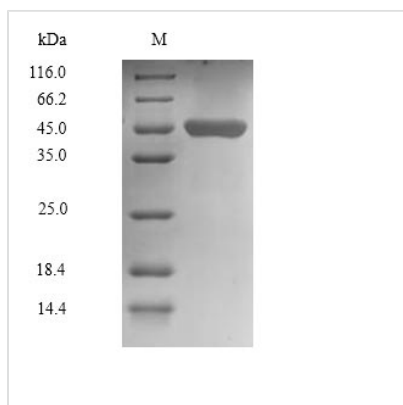




Recombinant Human Chitinase domain-containing protein 1 (CHID1)

Product Code	CSB-MP883614HU
Relevance	Saccharide- and LPS-binding protein with possible roles in pathogen sensing and endotoxin neutralization. Ligand-binding specificity relates to the length of the oligosaccharides, with preference for chitotetraose
Abbreviation	Recombinant Human CHID1 protein
Storage	The shelf life is related to many factors, storage state, buffer ingredients, storage temperature and the stability of the protein itself. Generally, the shelf life of liquid form is 6 months at -20°C/-80°C. The shelf life of lyophilized form is 12 months at -20°C/-80°C.
Uniprot No.	Q9BWS9
Product Type	Recombinant Proteins
Immunogen Species	Homo sapiens (Human)
Purity	Greater than 90% as determined by SDS-PAGE.
Sequence	<p> T L S K S D A K K A A S K T L L E K S Q F S D K P V Q D R G L V V T D L K A E S V V L E H R S Y C S A K A R D R H F A G D V L G Y V T P W N S H G Y D V T K V F G S K F T Q I S P V W L Q L K R R G R E M F E V T G L H D V D Q G W M R A V R K H A K G L H I V P R L L F E D W T Y D D F R N V L D S E D E I E E L S K T V V Q V A K N Q H F D G F V V E V W N Q L L S Q K R V G L I H M L T H L A E A L H Q A R L L A L L V I P P A I T P G T D Q L G M F T H K E F E Q L A P V L D G F S L M T Y D Y S T A H Q P G P N A P L S W V R A C V Q V L D P K S K W R S K I L L G L N F Y G M D Y A T S K D A R E P V V G A R Y I Q T L K D H R P R M V W D S Q A S E H F F E Y K K S R S G R H V V F Y P T L K S L Q V R L E L A R E L G V G V S I W E L G Q G L D Y F Y D L L </p>
Research Area	Immunology
Source	Mammalian cell
Target Names	CHID1
Expression Region	20-393aa
Notes	Repeated freezing and thawing is not recommended. Store working aliquots at 4°C for up to one week.
Tag Info	N-terminal 6xHis-Myc-tagged
Mol. Weight	46.8kDa
Protein Length	Full Length of Mature Protein
Image	



(Tris-Glycine gel) Discontinuous SDS-PAGE (reduced) with 5% enrichment gel and 15% separation gel.

Shelf Life

The shelf life is related to many factors, storage state, buffer ingredients, storage temperature and the stability of the protein itself. Generally, the shelf life of liquid form is 6 months at -20°C/-80°C. The shelf life of lyophilized form is 12 months at -20°C/-80°C.