



# Recombinant Human Semaphorin-4D (SEMA4D), partial (Active)

<b>Product Code</b>	CSB-MP835707HUd9
<b>Abbreviation</b>	Recombinant Human SEMA4D protein, partial (Active)
<b>Storage</b>	The shelf life is related to many factors, storage state, buffer ingredients, storage temperature and the stability of the protein itself. Generally, the shelf life of liquid form is 6 months at -20°C/-80°C. The shelf life of lyophilized form is 12 months at -20°C/-80°C.
<b>Uniprot No.</b>	Q92854
<b>Form</b>	Lyophilized powder
<b>Storage Buffer</b>	Lyophilized from a 0.2 µm filtered PBS, 6% Trehalose, pH 7.4
<b>Product Type</b>	Recombinant Protein
<b>Immunogen Species</b>	Homo sapiens (Human)
<b>Biological Activity</b>	①Measured by its binding ability in a functional ELISA. Immobilized human SEMA4D at 2 µg/mL can bind biotinylated Pepinemab, the EC <sub>50</sub> is 1.005-1.776 ng/mL. ②Measured by its binding ability in a functional ELISA. Immobilized human SEMA4D at 5 µg/mL can bind human PLXNB1 (CSB-MP018222HU2k6), the EC <sub>50</sub> is 0.8179-1.357 µg/mL.
<b>Purity</b>	Greater than 95% as determined by SDS-PAGE.
<b>Sequence</b>	MAFAPIPRITWEHREVHLVQFHEPDIYNYSALLLSEDKDTLYIGAREAVFAVNAL NISEKQHEVYWKVSEDKKAKCAEKGKSKQTECLNYIRVLQPLSATSPLYVCGTN AFQPACDHLNLTsfkFLGKNEDGKGRCPFDPahSYTSVMVDGELYSGTSYNF LGSEPIISRNSSHSPLRTEYAIPWLNESFVFADVIRKSPDSPDGEDDRVYFFFT EVSVEYEFVFRVLIPRIARVCKGDQGGRLTLQKKWTSFLKARLICSRPD SGLVF NVLRDVFVLRSPGLKVPVFYALFTPQLNNVGLSAVCAYNLSTAEVFSHGKYM QSTTVEQSHTKWVRYNGPVPKPRPGACIDSEARAANYTSSLNLPDKTLQFVK DHPLMDDSVTPIDNRPRLIKDVDNYTQIVVDRTQALDGTVDVDMFVSTDRGAL HKAISLEHAVHIIETQLFQDFEPVQTLLLSSKKGNRFVYAGSNSGVVQAPLAF CGKHGTCEDCVLARDPYCAWSPPTATCVALHQTESPSRGLIQEMSGDASVCP DKSKGSYRQHFFKHGGTAELKCSQKSNLARVFWKFQNGVLKAESPKYGLMG RKNLLIFNLSEGD SGVYQCLSEERVKNKTVFQVVAKHVLEVKVVPKPVVAPTL SVVQTEGSRIATKVLVASTQGSSPPTPAVQATSSGAILPPKPAPTGTSCPEKI VINTVPQLHSEKTMYLKSSDNR
<b>Research Area</b>	Immunology
<b>Source</b>	Mammalian cell
<b>Target Names</b>	SEMA4D
<b>Expression Region</b>	22-734aa
<b>Notes</b>	Repeated freezing and thawing is not recommended. Store working aliquots at



4°C for up to one week.

### Tag Info

C-terminal hFc1-tagged

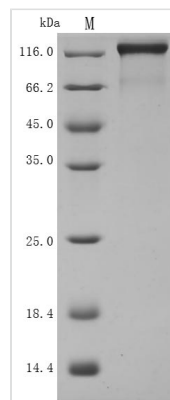
### Mol. Weight

108.1 kDa

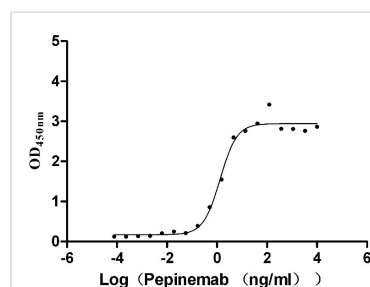
### Protein Length

Partial

### Image

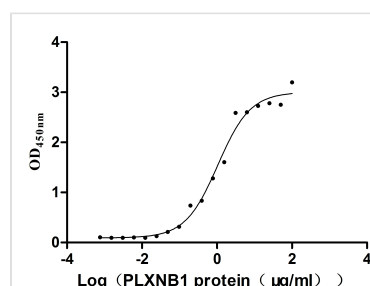


(Tris-Glycine gel) Discontinuous SDS-PAGE (reduced) with 5% enrichment gel and 15% separation gel.



### Activity

Measured by its binding ability in a functional ELISA. Immobilized human SEMA4D at 2 µg/ml can bind biotinylated Pepinemab, the EC<sub>50</sub> is 1.005-1.776 ng/mL.



### Activity

Measured by its binding ability in a functional ELISA. Immobilized human SEMA4D at 5 µg/ml can bind human PLXNB1 (CSB-MP018222HU2k6), the EC<sub>50</sub> is 0.8179-1.357 µg/mL.

### Description

The C-terminally hFc-tagged human semaphorin-4D (SEMA4D) is an active recombinant protein expressed in mammalian cells. Its expression region corresponds to amino acids 22-734 of the human SEMA4D. The purity of this SEMA4D protein is greater than 95% measured by SDS-PAGE. It migrated to the molecular weight band of about 120 kDa on the gel. Its endotoxin is less than 1.0 EU/ug determined by the LAL method. In a functional ELISA, this recombinant SEMA4D protein can bind biotinylated Pepinemab. The EC<sub>50</sub> is 1.005-1.776 ng/mL. SEMA4D, also known as CD100, is involved in immune regulation, bone formation, platelet inactivation, angiogenesis stimulation, and cancer bone metastasis.

### Endotoxin

Less than 1.0 EU/ug as determined by LAL method.



---

**Reconstitution**

We recommend that this vial be briefly centrifuged prior to opening to bring the contents to the bottom. Please reconstitute protein in deionized sterile water to a concentration of 0.1-1.0 mg/mL. We recommend to add 5-50% of glycerol (final concentration) and aliquot for long-term storage at -20°C/-80°C. Our default final concentration of glycerol is 50%. Customers could use it as reference.

---

**Shelf Life**

The shelf life is related to many factors, storage state, buffer ingredients, storage temperature and the stability of the protein itself. Generally, the shelf life of liquid form is 6 months at -20°C/-80°C. The shelf life of lyophilized form is 12 months at -20°C/-80°C.