

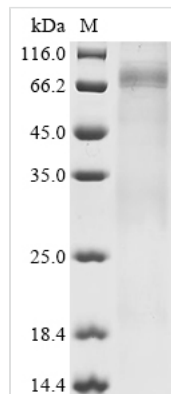


# Recombinant Mouse Dihydrolipoyllysine-residue acetyltransferase component of pyruvate dehydrogenase complex, mitochondrial (Dlat)

<b>Product Code</b>	CSB-MP804374MO
<b>Relevance</b>	The pyruvate dehydrogenase complex catalyzes the overall conversion of pyruvate to acetyl-CoA and CO <sub>2</sub> , and thereby links the glycolytic pathway to the tricarboxylic cycle.
<b>Abbreviation</b>	Recombinant Mouse Dlat protein
<b>Storage</b>	The shelf life is related to many factors, storage state, buffer ingredients, storage temperature and the stability of the protein itself. Generally, the shelf life of liquid form is 6 months at -20°C/-80°C. The shelf life of lyophilized form is 12 months at -20°C/-80°C.
<b>Uniprot No.</b>	Q8BMF4
<b>Storage Buffer</b>	Tris-based buffer, 50% glycerol
<b>Product Type</b>	Recombinant Proteins
<b>Immunogen Species</b>	Mus musculus (Mouse)
<b>Purity</b>	Greater than 90% as determined by SDS-PAGE.
<b>Sequence</b>	SLPPHQKVPLPSLSPTMQAGTIARWEKKEGEKISEGDLIAEVETDKATVGFESL EECYMAKILVPEGTRDVPVGSIIICITVEKPQDIEAFKNYTLDLAAAAAPQAAPAA APAPAAAPAAPSASAPGSSSYPTMQUIPLALSPTMTMGTVQRWEKKVGEKLS EGDLLAEIETDKATIGFEVQEEGYLAKILVPEGTRDVPVPLGAPLCIIVEKQEDIAAF ADYRPTTEVTSCLKPQAAPPAPPPVAAVPTPQPVAPTPSAAPAGPKGRVFSPL AKKLAAEKIDLTQVKGTGPEGRIKKDIDSFVPSKAAPAAAAAMAPPGRVAP APAGVFTDIPISNIRRVIAQRLMQSKQTIPHYLSVDVNMGEVLLVRKELNKMLE GKGKISVNDFIKASALACLKVPEANSSWMDTVIRQNHVVDVSVAVSTPAGLITP IVFNAHIKGLETIASDVVSLASKAREGKLQPHFQGGTFTISNLGMFGIKNFSAIL NPPQACILAIGASEDKLIPADNEKGFDVASVMSVTLSCDHRVVDGAVGAQWLA EFKKYLEKPITMLL
<b>Research Area</b>	Signal Transduction
<b>Source</b>	Mammalian cell
<b>Target Names</b>	Dlat
<b>Protein Names</b>	Recommended name: Dihydrolipoyllysine-residue acetyltransferase component of pyruvate dehydrogenase complex, mitochondrial EC= 2.3.1.12 Alternative name(s): Dihydrolipoamide acetyltransferase component of pyruvate dehydrogenase complex Pyruv
<b>Expression Region</b>	86-642aa
<b>Notes</b>	Repeated freezing and thawing is not recommended. Store working aliquots at 4°C for up to one week.



<b>Tag Info</b>	N-terminal 10xHis-tagged
<b>Mol. Weight</b>	61.3 kDa
<b>Protein Length</b>	Full Length of Mature Protein

**Image**


(Tris-Glycine gel) Discontinuous SDS-PAGE (reduced) with 5% enrichment gel and 15% separation gel.

**Shelf Life**

The shelf life is related to many factors, storage state, buffer ingredients, storage temperature and the stability of the protein itself. Generally, the shelf life of liquid form is 6 months at -20°C/-80°C. The shelf life of lyophilized form is 12 months at -20°C/-80°C.