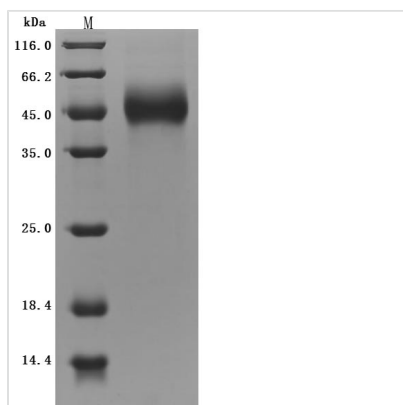


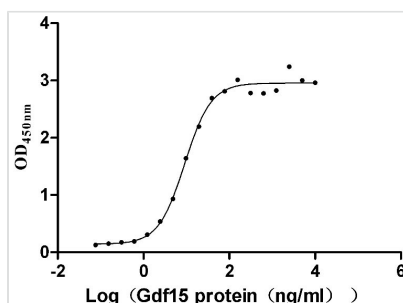


# Recombinant Mouse GDNF family receptor alpha-like (Gfral), partial (Active)

|                            |   |
|----------------------------|---|
| <b>Product Code</b>        | CSB-MP750964MO1   |
| <b>Abbreviation</b>        | Recombinant Mouse Gfral protein, partial (Active)   |
| <b>Storage</b>             | The shelf life is related to many factors, storage state, buffer ingredients, storage temperature and the stability of the protein itself. Generally, the shelf life of liquid form is 6 months at -20°C/-80°C. The shelf life of lyophilized form is 12 months at -20°C/-80°C.   |
| <b>Uniprot No.</b>         | Q6SJE0  |
| <b>Form</b>                | Lyophilized powder  |
| <b>Storage Buffer</b>      | Lyophilized from a 0.2 µm filtered 20 mM Tris-HCl, 0.5 M NaCl, 6% Trehalose, pH 8.0   |
| <b>Product Type</b>        | Recombinant Protein   |
| <b>Immunogen Species</b>   | Mus musculus (Mouse)  |
| <b>Biological Activity</b> | Measured by its binding ability in a functional ELISA. Immobilized Mouse Gfral at 5 µg/mL can bind Mouse Gdf15 (CSB-MP859530MO), the EC <sub>50</sub> is 7.926-10.52 ng/mL.   |
| <b>Purity</b>              | Greater than 95% as determined by SDS-PAGE.   |
| <b>Sequence</b>            | QTNDCAHLIQKCLIDANGCEQSWRSMEDTCLTPGDSCKINNSLHCNLSIQALV<br>EKNFQFKECLCMDDLHCTVKNLFGKKCTNKTNDMEKDNKDKWNLTTPFYHG<br>FKQMQSCLEVTEACVGDVVCNAQLALYLKACSANGNLCDVKHCQAAIRFFYQ<br>NMPFNTAQMLAFCDCAQSDIPCQQSKETLHSPKALNIVPPPTCLSVIHTCRN<br>DELCRTHYRTFQTECWPHITGKCHEDETCISMLGKQDLTCSGSESCRAAFLGT<br>FGTVLQVPCACRGVTQAEHVCMIFQHMLHKSFCNYPTPNVKDISSYEKNS<br>KEITLTGFNSFFNG |
| <b>Research Area</b>       | Cell Biology  |
| <b>Source</b>              | Mammalian cell  |
| <b>Target Names</b>        | Gfral   |
| <b>Expression Region</b>   | 20-349aa  |
| <b>Notes</b>               | Repeated freezing and thawing is not recommended. Store working aliquots at 4°C for up to one week.   |
| <b>Tag Info</b>            | N-terminal 10xHis-tagged and C-terminal Myc-tagged  |
| <b>Mol. Weight</b>         | 42.1 kDa  |
| <b>Protein Length</b>      | Partial   |
| <b>Image</b>               |   |



(Tris-Glycine gel) Discontinuous SDS-PAGE (reduced) with 5% enrichment gel and 15% separation gel.



**Activity**  
Measured by its binding ability in a functional ELISA. Immobilized Mouse Gfral at 5 µg/ml can bind Mouse Gdf15 (CSB-MP859530MO), the EC<sub>50</sub> is 7.926-10.52 ng/mL.

## Description

Empower your cell biology research with our Recombinant Mouse Gfral, known as GDNF family receptor alpha-like. Produced in mammalian cells, this protein is a pivotal player in the study of cellular growth, differentiation, and survival.

Our Gfral covers a partial length (20-349aa) and is expressed with a dual tag - N-terminal 10xHis-tag and C-terminal Myc-tag, assuring streamlined purification and enhanced stability. With an exceptional purity of over 95% as determined by SDS-PAGE and endotoxin levels of less than 1.0 EU/ug, our Recombinant Mouse Gfral adheres to the most stringent scientific standards. Notably, its binding ability has been confirmed in a functional ELISA, demonstrating its interaction with Mouse Gdf15. This product is supplied as a lyophilized powder for extended stability and convenience in your research workflow.

## Endotoxin

Less than 1.0 EU/ug as determined by LAL method.

## Reconstitution

We recommend that this vial be briefly centrifuged prior to opening to bring the contents to the bottom. Please reconstitute protein in deionized sterile water to a concentration of 0.1-1.0 mg/mL. We recommend to add 5-50% of glycerol (final concentration) and aliquot for long-term storage at -20°C/-80°C. Our default final concentration of glycerol is 50%. Customers could use it as reference.

## Shelf Life

The shelf life is related to many factors, storage state, buffer ingredients, storage temperature and the stability of the protein itself. Generally, the shelf life of liquid form is 6 months at -20°C/-80°C. The shelf life of lyophilized form is 12 months at -20°C/-80°C.