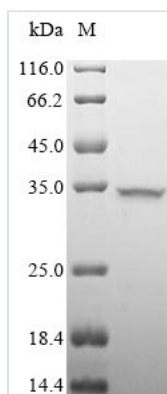




Recombinant Porcine parvovirus Capsid protein VP1, partial

Product Code	CSB-MP323858PQB
Relevance	Capsid protein self-assembles to form an icosahedral capsid with a T=1 symmetry, about 22 nm in diameter, and consisting of 60 copies of two size variants of the capsid proteins, VP1 and VP2, which differ by the presence of an N-terminal extension in the minor protein VP1. The capsid encapsulates the genomic ssDNA. Capsid proteins are responsible for the attachment to host cell receptors. This attachment induces virion internalization predominantly through clathrin-dependent endocytosis. Binding to the host receptors also induces capsid rearrangements leading to surface exposure of VP1 N-terminus, specifically its phospholipase A2-like region and putative nuclear localization signal(s). VP1 N-terminus might serve as a lipolytic enzyme to breach the endosomal membrane during entry into host cell and might contribute to virus transport to the nucleus
Abbreviation	Recombinant Porcine parvovirus Capsid protein VP1 protein, partial
Storage	The shelf life is related to many factors, storage state, buffer ingredients, storage temperature and the stability of the protein itself. Generally, the shelf life of liquid form is 6 months at -20°C/-80°C. The shelf life of lyophilized form is 12 months at -20°C/-80°C.
Uniprot No.	P18546
Product Type	Recombinant Protein
Immunogen Species	Porcine parvovirus (strain NADL-2) (PPV)
Purity	Greater than 85% as determined by SDS-PAGE.
Sequence	MAPPAKRARGLTLPGYKYLGPNSLDQGEPTNPSDAAAKEHDEAYDKYIKSG KNPYFYFSAADEKFIKETEHAKDYGGKIGHYFFRAKRAFAPKLSETDSPTTSQQ PEVRRSPRKHPGSKPPGKRPA PRHIFINLAKKKAKGTSNTNSNSMSENVEQH NPINAGTELSATGNESGGGGGGGGGGRGAGGVGVSTGTFNNQTEFQYLGE
Research Area	Others
Source	Mammalian cell
Protein Names	Coat protein VP1
Expression Region	1-207aa
Notes	Repeated freezing and thawing is not recommended. Store working aliquots at 4°C for up to one week.
Tag Info	N-terminal 10xHis-tagged and C-terminal Myc-tagged
Mol. Weight	26.4 kDa
Protein Length	Partial
Image	



(Tris-Glycine gel) Discontinuous SDS-PAGE (reduced) with 5% enrichment gel and 15% separation gel.

Reconstitution

We recommend that this vial be briefly centrifuged prior to opening to bring the contents to the bottom. Please reconstitute protein in deionized sterile water to a concentration of 0.1-1.0 mg/mL. We recommend to add 5-50% of glycerol (final concentration) and aliquot for long-term storage at -20°C/-80°C. Our default final concentration of glycerol is 50%. Customers could use it as reference.

Shelf Life

The shelf life is related to many factors, storage state, buffer ingredients, storage temperature and the stability of the protein itself. Generally, the shelf life of liquid form is 6 months at -20°C/-80°C. The shelf life of lyophilized form is 12 months at -20°C/-80°C.