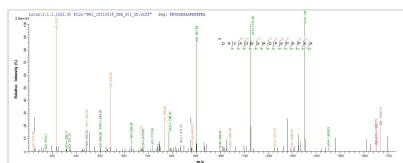




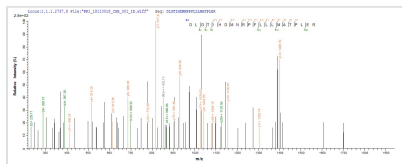
Recombinant Rat Transforming growth factor beta-1 proprotein (Tgfb1), partial

Product Code	CSB-MP023446RA
Abbreviation	Recombinant Rat Tgfb1 protein, partial
Storage	The shelf life is related to many factors, storage state, buffer ingredients, storage temperature and the stability of the protein itself. Generally, the shelf life of liquid form is 6 months at -20°C/-80°C. The shelf life of lyophilized form is 12 months at -20°C/-80°C.
Uniprot No.	P17246
Product Type	Recombinant Protein
Immunogen Species	Rattus norvegicus (Rat)
Purity	Greater than 85% as determined by SDS-PAGE.
Sequence	LSTCKTIDMELVKRKRIEAIRGQILSKLRLASPPSQGEVPPGGLPEAVLALYNST RDRVAGESADPEPEPEADYYAKEVTRVLMVDRNNAIYDKTKDITHSIYMFNT SDIREAVPEPPLLSRAELRLQRFKSTVEQHVELYQKYSNNSWRYLGNRLLTPT DTPEWLSFDVTGVVRQWLNQGDGIQGFRFSAHCSCDSKDNVLHVEINGISPK RRGDLGTIHD MNRPFLLLMATPLERAQHLHSSRHRR
Research Area	Cancer
Source	Mammalian cell
Target Names	Tgfb1
Protein Names	Recommended name: Transforming growth factor beta-1 Short name= TGF-beta-1 Cleaved into the following chain: 1. Latency-associated peptide Short name= 2. LAP
Expression Region	30-278aa
Notes	Repeated freezing and thawing is not recommended. Store working aliquots at 4°C for up to one week.
Tag Info	N-terminal 6xHis-tagged
Mol. Weight	30.7
Protein Length	Partial

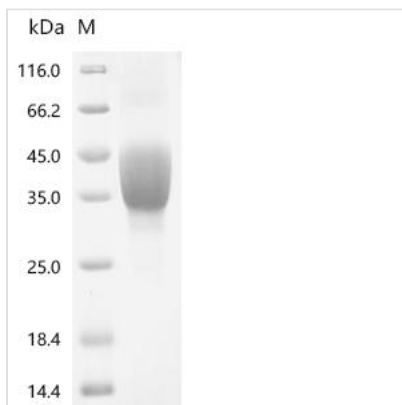
Image



Based on the SEQUEST from database of Mammalian Cell host and target protein, the LC-MS/MS Analysis result of CSB-MP023446RA could indicate that this peptide derived from Mammalian Cell-expressed Rattus norvegicus (Rat) Tgfb1.



Based on the SEQUEST from database of Mammalian Cell host and target protein, the LC-MS/MS Analysis result of CSB-MP023446RA could indicate that this peptide derived from Mammalian Cell-expressed *Rattus norvegicus* (Rat) Tgfb1.



(Tris-Glycine gel) Discontinuous SDS-PAGE (reduced) with 5% enrichment gel and 15% separation gel.

Reconstitution

We recommend that this vial be briefly centrifuged prior to opening to bring the contents to the bottom. Please reconstitute protein in deionized sterile water to a concentration of 0.1-1.0 mg/mL. We recommend to add 5-50% of glycerol (final concentration) and aliquot for long-term storage at -20°C/-80°C. Our default final concentration of glycerol is 50%. Customers could use it as reference.

Shelf Life

The shelf life is related to many factors, storage state, buffer ingredients, storage temperature and the stability of the protein itself. Generally, the shelf life of liquid form is 6 months at -20°C/-80°C. The shelf life of lyophilized form is 12 months at -20°C/-80°C.