

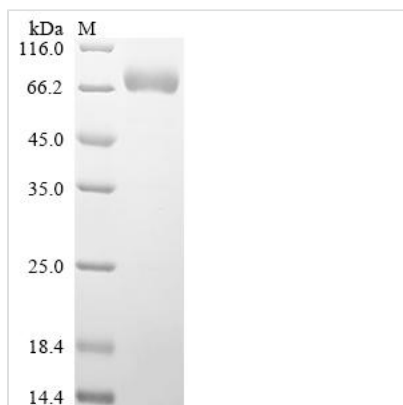


Recombinant Human Sphingomyelin phosphodiesterase (SMPD1)

Product Code	CSB-MP021845HU
Abbreviation	Recombinant Human SMPD1 protein
Storage	The shelf life is related to many factors, storage state, buffer ingredients, storage temperature and the stability of the protein itself. Generally, the shelf life of liquid form is 6 months at -20°C/-80°C. The shelf life of lyophilized form is 12 months at -20°C/-80°C.
Uniprot No.	P17405
Form	Liquid or Lyophilized powder
Storage Buffer	If the delivery form is liquid, the default storage buffer is Tris/PBS-based buffer, 5%-50% glycerol. If the delivery form is lyophilized powder, the buffer before lyophilization is Tris/PBS-based buffer, 6% Trehalose.
Product Type	Recombinant Human Sphingomyelin phosphodiesterase(SMPD1),partial
Immunogen Species	Homo sapiens (Human)
Purity	Greater than 90% as determined by SDS-PAGE.
Sequence	LALSDSRVLWAPAEAHPLSPQGHPARLHRIVPRLRDVFGWGNLTCPICKGLFT AINLGLKKEPNVARVGSVAIKLCNLLKIAPPAVCQSIVHLFEDDMVEVWRRSVL SPSEACGLLLGSTCGHWDIFSSWNISLPTVPKPPPSPAPGAPVSRILFLT DLHWDHDYLEGTDPCADPLCCRRGSGLPASRPGAGYWGEYSKCDLPLRT LESLLSGLGPAGPFDMVYWTGDIPAHDVWHQTRQDQLRALTTVTALVRKFLG PVPVYPAVGNHSTPVNSFPFFIEGNHSSRWLYEAMAKAWEPWLPAEALRT LRIGGFYALSPYPGLRLISLNMNFCsRENFWLLINSTDPAGQLQWLVGELQAA EDRGDKVHIIGHIPPGHCLKSWSWNYRIVARYENTLAAQFFGHTHVDEFEVF YDEETLSRPLAVAFLAPSATTYIGLNPGYRVYQIDGNYSGSSHVVLDHETYILNL TQANIPGAIPHWQLLYRARETYGLPNTLPTAWHNLVYRMRGDMQLFQTFWFL YHKGHPPSEPCGTPCRLATLCAQLSARADSPALCRHLMPDGSLPEAQLSWPR PLFC
Research Area	Neuroscience
Source	Mammalian cell
Target Names	SMPD1
Expression Region	47-631aa
Notes	Repeated freezing and thawing is not recommended. Store working aliquots at 4°C for up to one week.
Tag Info	C-terminal 10xHis-tagged
Mol. Weight	66.6 kDa
Protein Length	Full Length of Mature Protein



Image



(Tris-Glycine gel) Discontinuous SDS-PAGE (reduced) with 5% enrichment gel and 15% separation gel.

Description

The product CSB-MP021845HU is recombinantly expressed in mammalian cells, with a C-terminal 10xHis-tag. Its expression region encodes the amino acids 47-631 of the human SMPD1 protein. The purity of this recombinant human SMPD1 protein is measured by SDS-PAGE, exceeding 90%. It is visualized as a band with an approximate molecular weight of 67 kDa.

The human SMPD1 protein mainly catalyzes the hydrolysis of sphingomyelin, playing a vital role in sphingolipid metabolism, lysosomal function, and cellular signaling. Its activity is essential for maintaining cellular homeostasis and preventing the development of lysosomal storage disorders.

Reconstitution

We recommend that this vial be briefly centrifuged prior to opening to bring the contents to the bottom. Please reconstitute protein in deionized sterile water to a concentration of 0.1-1.0 mg/mL. We recommend to add 5-50% of glycerol (final concentration) and aliquot for long-term storage at -20°C/-80°C. Our default final concentration of glycerol is 50%. Customers could use it as reference.

Shelf Life

The shelf life is related to many factors, storage state, buffer ingredients, storage temperature and the stability of the protein itself. Generally, the shelf life of liquid form is 6 months at -20°C/-80°C. The shelf life of lyophilized form is 12 months at -20°C/-80°C.