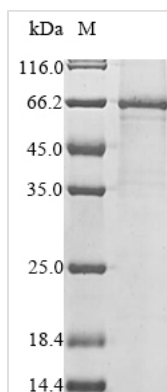




Recombinant Human Mothers against decapentaplegic homolog 6 (SMAD6)

Product Code	CSB-MP021792HU
Abbreviation	Recombinant Human SMAD6 protein
Storage	The shelf life is related to many factors, storage state, buffer ingredients, storage temperature and the stability of the protein itself. Generally, the shelf life of liquid form is 6 months at -20°C/-80°C. The shelf life of lyophilized form is 12 months at -20°C/-80°C.
Uniprot No.	O43541
Product Type	Recombinant Proteins
Immunogen Species	Homo sapiens (Human)
Purity	Greater than 85% as determined by SDS-PAGE.
Sequence	MFRSKRSGLVRRLLWRSRVVPDREEGGSGGGGGGDEEDGSLGSRAEPAPRAR EGGGCGRSEVRPVAPRRPRDAVGQRGAQGAGRRRRAGGPPRPMSEPGAG AGSSLLDVAEPGGPGWLPESDCETVTCCLFSERDAAGAPRDASDPLAGAALE PAGGGRSREARSRLLLLEQELKTVTYSLKRLKERSLDTLLEAVESRGGVPGG CVLVPRADLRLGGQPAPPQLLLGRLFRWPDQLHAVELKPLCGCHSFAAAADG PTVCCNPYHFSRLCGPESPPPPYSRLSPRDEYKPLDLSDSTLSYTETEATNSLI TAPGEFSDASMSPDATKPSHWCSVAYWEHRTRVGRLYAVYDQAVSIFYDLPQ GSGFCLGQLNLEQRSESVRRTRSKIGFGILLSKEPDGVWAYNRGEHPIFVNSP TLDAPGGRALVVRKVPPGYSIKVFDFERSGLQHAPEPDAADGPYDPNSVRISF AKGWGPCYSRQFITSCPCWLEILLNNPR
Research Area	Epigenetics and Nuclear Signaling
Source	Mammalian cell
Target Names	SMAD6
Protein Names	Recommended name: Mothers against decapentaplegic homolog 6 Short name= MAD homolog 6 Short name= Mothers against DPP homolog 6 Alternative name(s): SMAD family member 6 Short name= SMAD 6 Short name= Smad6 Short na
Expression Region	1-496aa
Notes	Repeated freezing and thawing is not recommended. Store working aliquots at 4°C for up to one week.
Tag Info	N-terminal 10xHis-tagged and C-terminal Myc-tagged
Mol. Weight	58.5
Protein Length	Full Length
Image	



(Tris-Glycine gel) Discontinuous SDS-PAGE (reduced) with 5% enrichment gel and 15% separation gel.

Shelf Life

The shelf life is related to many factors, storage state, buffer ingredients, storage temperature and the stability of the protein itself. Generally, the shelf life of liquid form is 6 months at -20°C/-80°C. The shelf life of lyophilized form is 12 months at -20°C/-80°C.