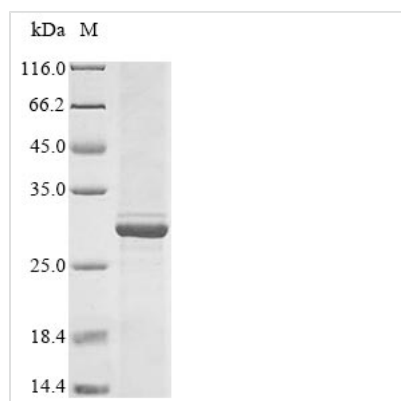




Recombinant Human Blood group Rh (D) polypeptide (RHD), partial

Product Code	CSB-MP019677HU
Relevance	May be part of an oligomeric complex which is likely to have a transport or channel function in the erythrocyte membrane.
Abbreviation	Recombinant Human RHD protein, partial
Storage	The shelf life is related to many factors, storage state, buffer ingredients, storage temperature and the stability of the protein itself. Generally, the shelf life of liquid form is 6 months at -20°C/-80°C. The shelf life of lyophilized form is 12 months at -20°C/-80°C.
Uniprot No.	Q02161
Product Type	Recombinant Protein
Immunogen Species	Homo sapiens (Human)
Purity	Greater than 85% as determined by SDS-PAGE.
Sequence	LNLKIWKAPHEAKYFDDQVFWKFPHLAVGF
Research Area	Cardiovascular
Source	Mammalian cell
Target Names	RHD
Protein Names	RHXIII Rh polypeptide 2 Short name: RhPII Rhesus D antigen CD_antigen: CD240D
Expression Region	388-417aa
Notes	Repeated freezing and thawing is not recommended. Store working aliquots at 4°C for up to one week.
Tag Info	N-terminal GST-tagged
Mol. Weight	29.6 kDa
Protein Length	Partial

Image



(Tris-Glycine gel) Discontinuous SDS-PAGE (reduced) with 5% enrichment gel and 15% separation gel.

Based on the SEQUEST from database of Mammalian Cell host and target protein, the LC-MS/MS Analysis result of CSB-MP019677HU could indicate that this peptide derived from Mammalian Cell-expressed Homo sapiens (Human) RHD.

Based on the SEQUEST from database of Mammalian Cell host and target protein, the LC-MS/MS Analysis result of CSB-MP019677HU could indicate that this peptide derived from Mammalian Cell-expressed Homo sapiens (Human) RHD.

We recommend that this vial be briefly centrifuged prior to opening to bring the contents to the bottom. Please reconstitute protein in deionized sterile water to a concentration of 0.1-1.0 mg/mL. We recommend to add 5-50% of glycerol (final concentration) and aliquot for long-term storage at -20°C/-80°C. Our default final concentration of glycerol is 50%. Customers could use it as reference.

The shelf life is related to many factors, storage state, buffer ingredients, storage temperature and the stability of the protein itself. Generally, the shelf life of liquid form is 6 months at -20°C/-80°C. The shelf life of lyophilized form is 12 months at -20°C/-80°C.