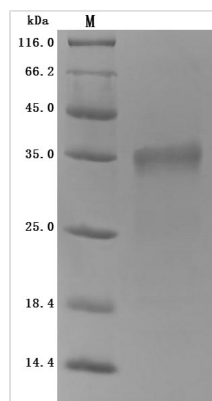


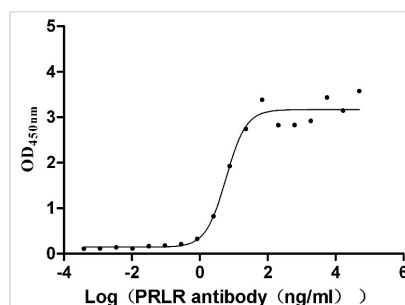


Recombinant Mouse Prolactin receptor (Prlr), partial (Active)

Product Code	CSB-MP018727MO
Abbreviation	Recombinant Mouse Prlr protein, partial (Active)
Storage	The shelf life is related to many factors, storage state, buffer ingredients, storage temperature and the stability of the protein itself. Generally, the shelf life of liquid form is 6 months at -20°C/-80°C. The shelf life of lyophilized form is 12 months at -20°C/-80°C.
Uniprot No.	Q08501
Form	Lyophilized powder
Storage Buffer	Lyophilized from a 0.2 µm filtered 20 mM Tris-HCl, 0.5 M NaCl, 6% Trehalose, pH 8.0
Product Type	Recombinant Protein
Immunogen Species	Mus musculus (Mouse)
Biological Activity	Measured by its binding ability in a functional ELISA. Immobilized Mouse Prlr at 5 µg/mL can bind Anti-PRLR recombinant antibody (CSB-RA018727A0HU), the EC ₅₀ is 4.021-8.706 ng/mL.
Purity	Greater than 95% as determined by SDS-PAGE.
Sequence	QSPPGKPEIHKCRSPDKETFTCWNNPGSDGGLPTNYSLTYSKEGEKNTYECPDYKTSGPNSCFFSKQYTSIWKIYIITVNATNEMGSSTSDPLYVDVTYIVEPEPPRNLTLVKQLKDKKTYLWVKWLPPTITDVKTGWFTMEYEIRLKSEEADEWEIHFTGHQTQFKVFDLYPGQKYLQTRCKPDHGYWSRWGQEKSEIPNDFTLKD
Source	Mammalian cell
Target Names	Prlr
Expression Region	20-229aa
Notes	Repeated freezing and thawing is not recommended. Store working aliquots at 4°C for up to one week.
Tag Info	C-terminal 10xHis-tagged
Mol. Weight	27.3 kDa
Protein Length	Partial
Image	



(Tris-Glycine gel) Discontinuous SDS-PAGE (reduced) with 5% enrichment gel and 15% separation gel.



Activity
Measured by its binding ability in a functional ELISA. Immobilized Mouse Prlr at 5 µg/ml can bind Anti-PRLR recombinant antibody (CSB-RA018727A0HU), the EC₅₀ is 4.021-8.706 ng/mL.

Description

This Mouse Prlr recombinant protein was produced in mammalian cell, where the gene sequence encoding Mouse Prlr (20-229aa) was expressed with the C-terminal 10xHis tag. The purity of this Prlr protein was greater than 95% by SDS-PAGE. The activity was measured in a functional ELISA.

Prolactin is a single-chain polypeptide hormone secreted by glandular eosinophils in the anterior pituitary of vertebrates, and widely acts on the gonads and mammary glands of animals. To perform its function, prolactin must bind to the prolactin receptor (PRLR), and act on the target cell through the receptor to cause various physiological and biochemical reactions of the target cell. Studies have shown that mutations in the prolactin gene and the prolactin receptor gene can cause reproductive dysfunction in animals. PRLR is involved in a variety of biological functions, including cell growth, differentiation, development, lactation and reproduction. Abnormal prolactin receptors are closely related to the incidence and prognosis of certain tumors, especially breast cancer.

Endotoxin

Less than 1.0 EU/ug as determined by LAL method.

Reconstitution

We recommend that this vial be briefly centrifuged prior to opening to bring the contents to the bottom. Please reconstitute protein in deionized sterile water to a concentration of 0.1-1.0 mg/mL. We recommend to add 5-50% of glycerol (final concentration) and aliquot for long-term storage at -20°C/-80°C. Our default final concentration of glycerol is 50%. Customers could use it as reference.

Shelf Life

The shelf life is related to many factors, storage state, buffer ingredients, storage temperature and the stability of the protein itself. Generally, the shelf life of liquid form is 6 months at -20°C/-80°C. The shelf life of lyophilized form is 12 months at -20°C/-80°C.