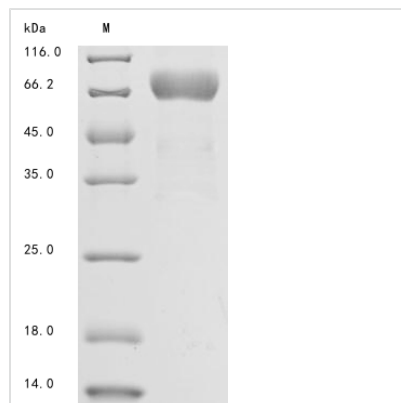




Recombinant Human Mesothelin (MSLN), partial

Product Code	CSB-MP015044HU
Abbreviation	Recombinant Human MSLN protein, partial
Storage	The shelf life is related to many factors, storage state, buffer ingredients, storage temperature and the stability of the protein itself. Generally, the shelf life of liquid form is 6 months at -20°C/-80°C. The shelf life of lyophilized form is 12 months at -20°C/-80°C.
Uniprot No.	Q13421
Storage Buffer	Tris-based buffer,50% glycerol
Product Type	Recombinant Proteins
Immunogen Species	Homo sapiens (Human)
Purity	Greater than 85% as determined by SDS-PAGE.
Sequence	EVEKTACPSGKKAREIDESLIFYKKWELEACVDAALLATQMDRVNAIPFTYEQL DVLKHKLDELYPQGYPESVIQHLGYLFLKMSPEDIRKWNVTSLETLKALLEVNK GHEMSPQVATLIDRFVKGRGQLDKDTLDTLTAFYPGYLCSLSPEELSSVPPSSI WAVRPQDLDTCDPRQLDVLYPKARLAFQNMNGSEYFVKIQSFLGGAPTEDLK ALSQQNVSMDLATFMKLRTDAVLPLTVAEVQKLLGPHVEGLKAEERHRPVRD WILRQRQDDLDLTLGLGLQG
Research Area	Cancer
Source	Mammalian cell
Target Names	MSLN
Expression Region	296-580aa
Notes	Repeated freezing and thawing is not recommended. Store working aliquots at 4°C for up to one week.
Tag Info	C-terminal hFc1-tagged
Mol. Weight	61.2
Protein Length	Partial

Image



(Tris-Glycine gel) Discontinuous SDS-PAGE (reduced) with 5% enrichment gel and 15% separation gel.



Description

To express the recombinant Human MSLN protein in mammalian cells, a DNA fragment encoding the Human MSLN protein (296-580aa) is inserted into a plasmid vector and transferred to the mammalian cells. Cells containing the plasmid are screened, cultured, and induced to express the MSLN protein. The protein carries a C-terminal hFc tag. Lysing the cells allows for the collection of the recombinant Human MSLN protein, which is purified through affinity purification and then identified through SDS-PAGE and subsequent staining of the gel with Coomassie Brilliant Blue. The purity of the recombinant Human MSLN protein obtained is greater than 85%.

Shelf Life

The shelf life is related to many factors, storage state, buffer ingredients, storage temperature and the stability of the protein itself. Generally, the shelf life of liquid form is 6 months at -20°C/-80°C. The shelf life of lyophilized form is 12 months at -20°C/-80°C.