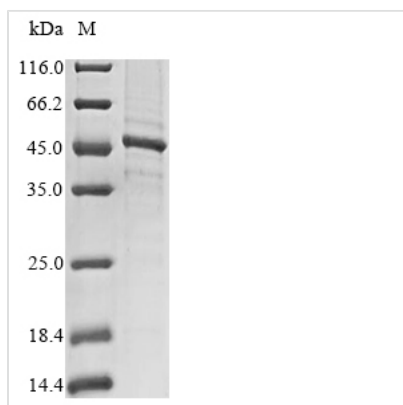




Recombinant Human Matrix metalloproteinase-20 (MMP20)

Product Code	CSB-MP014667HU
Abbreviation	Recombinant Human MMP20 protein
Storage	The shelf life is related to many factors, storage state, buffer ingredients, storage temperature and the stability of the protein itself. Generally, the shelf life of liquid form is 6 months at -20°C/-80°C. The shelf life of lyophilized form is 12 months at -20°C/-80°C.
Uniprot No.	O60882
Product Type	Recombinant Proteins
Immunogen Species	Homo sapiens (Human)
Purity	Greater than 85% as determined by SDS-PAGE.
Sequence	YRLFPGEPKWKKNTLTYSKYTPSMSSVEVDKAVEMALQAWSSAVPLSFVRI NSGEADIMISFENGHDHGDSPFDGPRGTLAHAFAPGEGGLGGDTHFDNAEKWT MGTNGFNLFTVAAHEFGHALGLAHSTDPALMYPTYKYKNPYGFHLPKDDVK GIQALYGPRKVFLGKPTLPHAPHHKPSIPDLCDSSSSFDAVTMLGKELLFLKDR IFWRRQVHLRTGIRPSTITSSFPQLMSNVDAAYEVAERGTAFFKGPYHWITR GFQMQGPPRTIYDFGFPRHVQQIDAAYVLREPQKTLFFVVGDEYYSYDERKRK MEKDYPKNTTEEFSGVNGQIDAAYELNGYIYFFSGPKTYKYDTEKEDVVSVMK SSSWIGC
Research Area	Others
Source	Mammalian cell
Target Names	MMP20
Protein Names	Recommended name: Matrix metalloproteinase-20 Short name= MMP-20 EC= 3.4.24.- Alternative name(s): Enamel metalloproteinase Enamelysin
Expression Region	108-483aa
Notes	Repeated freezing and thawing is not recommended. Store working aliquots at 4°C for up to one week.
Tag Info	N-terminal 10xHis-tagged and C-terminal Myc-tagged
Mol. Weight	47.6
Protein Length	Full Length of Mature Protein
Image	



(Tris-Glycine gel) Discontinuous SDS-PAGE (reduced) with 5% enrichment gel and 15% separation gel.

Shelf Life

The shelf life is related to many factors, storage state, buffer ingredients, storage temperature and the stability of the protein itself. Generally, the shelf life of liquid form is 6 months at -20°C/-80°C. The shelf life of lyophilized form is 12 months at -20°C/-80°C.