



Recombinant Human Melanotransferrin (MELTF) (Active)

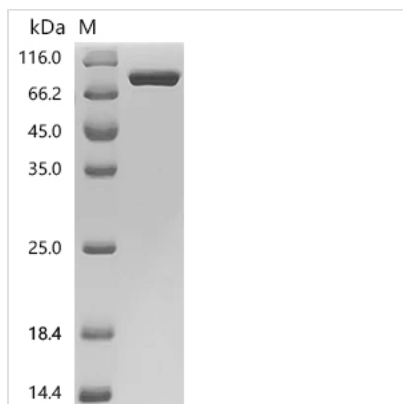
Product Code	CSB-MP013754HU1
Abbreviation	Recombinant Human MELTF protein (Active)
Storage	The shelf life is related to many factors, storage state, buffer ingredients, storage temperature and the stability of the protein itself. Generally, the shelf life of liquid form is 6 months at -20°C/-80°C. The shelf life of lyophilized form is 12 months at -20°C/-80°C.
Uniprot No.	P08582
Form	Lyophilized powder
Storage Buffer	Lyophilized from a 0.2 µm filtered PBS, 6% Trehalose, pH 7.4
Product Type	Recombinant Protein
Immunogen Species	Homo sapiens (Human)
Biological Activity	Measured by its binding ability in a functional ELISA. Immobilized Human MELTF at 2 µg/mL can bind Anti-MELTF recombinant antibody (CSB-RA013754MA1HU). The EC50 is 0.3476-0.4529 ng/mL.
Purity	Greater than 95% as determined by SDS-PAGE. Greater than 95% as determined by SEC-HPLC.
Sequence	GMEVRWCATSDPEQHKCGNMSEAFREAGIQPSLLCVRGTSADHCVQLIAAQE ADAITLDGGAIYEAGKEHGLKPVVGEVYDQEVGTSYYAVAVVRRSSHVTIDTLK GVKSCHTGINRTVGWNVPVGYLVESGRLSVMGCDVLKAVSDYFGGSCVPGA GETSYSESLCRLCRGDSSGEGVCDKSPLERYDYSGAFRCLAEGAGDVAFAVK HSTVLENTDGTKLPSWGQALLSQDFELLCRDGSRADVTEWRQCHLARVPAH AVVVRADTDGGLIFRLLNEGQRLFSHEGSSFQMFSEAYGQKDLLFKDSTSEL VPIATQTYEAWLGHEYLHAMKGLLCDPNRLPPYLRWCVLSTPEIQKCGDMAV AFRRQRLKPEIQCVSAKSPQHCMERIQAEQVDAVTLSGEDIYTAGKTYGLVPA AGEHYAPEDSSNSYYVAVVRRDSSHAFTLDELRGKRSCHAGFGSPAGWDV PVGALIQRGFIRPKDCDVLTAVERSEFFNASCPVNNPNKNYPSSLCALCVGDEQG RNKCVGNSQERYGYRGAFRCLVENAGDVAFVRHTTVFDNTNGHNSEPWAA ELRSEDYELLCPNGARAEVSQFAACNLAQIPPHAVMVRPDTNIFTVYGLLDKA QDLFGDDHNKNGFKMFDSSNYHGQDLLFKDATVRAVPVGEKTTYRGWLGLD YVAALEGMSSQQC
Source	Mammalian cell
Target Names	MELTF
Expression Region	20-709aa
Notes	Repeated freezing and thawing is not recommended. Store working aliquots at 4°C for up to one week.
Tag Info	C-terminal 10xHis-tagged


Mol. Weight

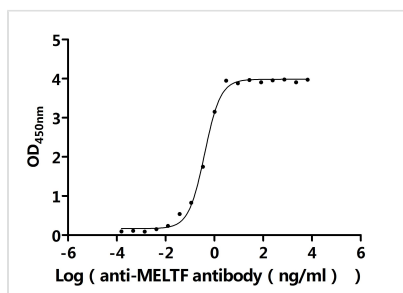
76.9 kDa

Protein Length

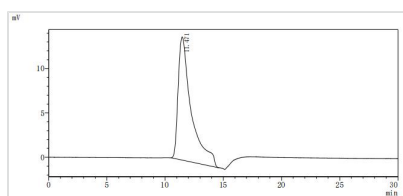
Full Length of Mature Protein of Isoform 1

Image


(Tris-Glycine gel) Discontinuous SDS-PAGE (reduced) with 5% enrichment gel and 15% separation gel.


Activity

Measured by its binding ability in a functional ELISA. Immobilized Human MELTF at 2 µg/ml can bind Anti-MELTF recombinant antibody (CSB-RA013754MA1HU). The EC₅₀ is 0.3476-0.4529 ng/mL.



The purity of MELTF was greater than 95% as determined by SEC-HPLC

Endotoxin

Less than 1.0 EU/ug as determined by LAL method.

Reconstitution

We recommend that this vial be briefly centrifuged prior to opening to bring the contents to the bottom. Please reconstitute protein in deionized sterile water to a concentration of 0.1-1.0 mg/mL. We recommend to add 5-50% of glycerol (final concentration) and aliquot for long-term storage at -20°C/-80°C. Our default final concentration of glycerol is 50%. Customers could use it as reference.

Shelf Life

The shelf life is related to many factors, storage state, buffer ingredients, storage temperature and the stability of the protein itself. Generally, the shelf life of liquid form is 6 months at -20°C/-80°C. The shelf life of lyophilized form is 12 months at -20°C/-80°C.