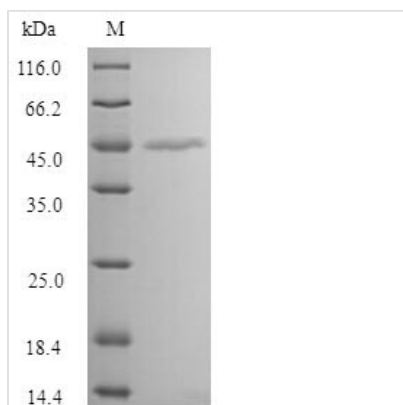




# Recombinant Human Melanoma-associated antigen 1 (MAGEA1)

<b>Product Code</b>	CSB-MP013323HU
<b>Relevance</b>	May be involved in transcriptional regulation through interaction with SNW1 and recruiting histone deacetylase HDAC1. May inhibit notch intracellular domain (NICD) transactivation. May play a role in embryonal development and tumor transformation or aspects of tumor progression. Antigen recognized on a melanoma by autologous cytolytic T-lymphocytes.
<b>Abbreviation</b>	Recombinant Human MAGEA1 protein
<b>Storage</b>	The shelf life is related to many factors, storage state, buffer ingredients, storage temperature and the stability of the protein itself. Generally, the shelf life of liquid form is 6 months at -20°C/-80°C. The shelf life of lyophilized form is 12 months at -20°C/-80°C.
<b>Uniprot No.</b>	P43355
<b>Alias</b>	Antigen MZ2-E Cancer/testis antigen 1.1 Short name: CT1.1 MAGE-1 antigen
<b>Product Type</b>	Recombinant Protein
<b>Immunogen Species</b>	Homo sapiens (Human)
<b>Purity</b>	Greater than 90% as determined by SDS-PAGE.
<b>Sequence</b>	MSLEQRSLHCKPEEALDAQQEALGLVCVQAATSSSSPLVLGTLEEVPTAGSTD PPQSPQGASAFPTTINFTRQRQPSEGSSSREEEGPSTSCILESLFRAVITKKVA DLVGFLLLKYRAREPVTKAEMLESVIKNYKHCFPEIFGKASESLQLVFGIDVKEA DPTGHSYVLVTCLGLSYDGLLDGNQIMPKTGFLIIVLVMAMEGGHAPEEEIWE ELSVMEVYDGREHSAYGEPRKLLTQDLVQEKYLEYRQVPDSDPARYEFLWGP RALAETSYVKVLEYVIKVSARVRFFFPSLREAAALREEEEGV
<b>Research Area</b>	Cancer
<b>Source</b>	Mammalian cell
<b>Target Names</b>	MAGEA1
<b>Expression Region</b>	1-309aa
<b>Notes</b>	Repeated freezing and thawing is not recommended. Store working aliquots at 4°C for up to one week.
<b>Tag Info</b>	N-terminal Flag-Myc-tagged
<b>Mol. Weight</b>	38.8 kDa
<b>Protein Length</b>	Full Length
<b>Image</b>	



(Tris-Glycine gel) Discontinuous SDS-PAGE (reduced) with 5% enrichment gel and 15% separation gel.

### Reconstitution

We recommend that this vial be briefly centrifuged prior to opening to bring the contents to the bottom. Please reconstitute protein in deionized sterile water to a concentration of 0.1-1.0 mg/mL. We recommend to add 5-50% of glycerol (final concentration) and aliquot for long-term storage at -20°C/-80°C. Our default final concentration of glycerol is 50%. Customers could use it as reference.

### Shelf Life

The shelf life is related to many factors, storage state, buffer ingredients, storage temperature and the stability of the protein itself. Generally, the shelf life of liquid form is 6 months at -20°C/-80°C. The shelf life of lyophilized form is 12 months at -20°C/-80°C.