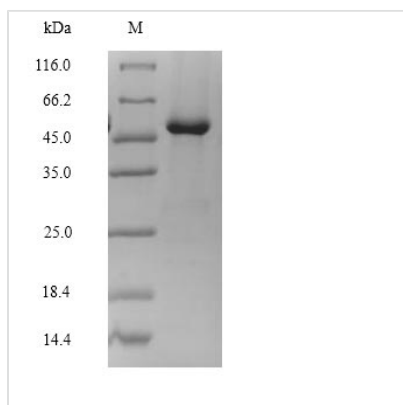




Recombinant Rat Lutropin-choriogonadotropic hormone receptor (Lhcgr), partial

Product Code	CSB-MP012911RA
Relevance	Receptor for lutropin-choriogonadotropic hormone. The activity of this receptor is mediated by G proteins which activate adenylate cyclase.
Abbreviation	Recombinant Rat Lhcgr protein, partial
Storage	The shelf life is related to many factors, storage state, buffer ingredients, storage temperature and the stability of the protein itself. Generally, the shelf life of liquid form is 6 months at -20°C/-80°C. The shelf life of lyophilized form is 12 months at -20°C/-80°C.
Uniprot No.	P16235
Product Type	Recombinant Proteins
Immunogen Species	Rattus norvegicus (Rat)
Purity	Greater than 90% as determined by SDS-PAGE.
Sequence	RELSGSRCPEPCDCAPD GALRC PGPRAGLARLSLT YLPVKVIP SQAFRGLNEV VKIEISQSDSLERIEANAFDNL LNSELLIQNTKNLLYIEPGAFTNLPRLKYLSICN TGIRTL PDVTKISSSEFNFILEICDNLHITTIPGNAFQGMNNE SVTLKLYGNGFEE VQSHAFNGTT LISLELKENIYLEKMHSGAFQGATGPSILDISSTKLQALPSHGLE SIQTLIALSSYSLKTLPSKEKFTSLLVATLTYP SHCCAFRNLPKKEQNFSFSIFEN FSKQCESTVRKADNETLYSAIFEENELSGWDYDYGF CSPKTLQCAPEPDAFNP CEDIMG
Research Area	Others
Source	Mammalian cell
Target Names	Lhcgr
Expression Region	27-362aa
Notes	Repeated freezing and thawing is not recommended. Store working aliquots at 4°C for up to one week.
Tag Info	C-terminal Flag-tagged
Mol. Weight	47.8kDa
Protein Length	partial
Image	



(Tris-Glycine gel) Discontinuous SDS-PAGE (reduced) with 5% enrichment gel and 15% separation gel.

Shelf Life

The shelf life is related to many factors, storage state, buffer ingredients, storage temperature and the stability of the protein itself. Generally, the shelf life of liquid form is 6 months at -20°C/-80°C. The shelf life of lyophilized form is 12 months at -20°C/-80°C.