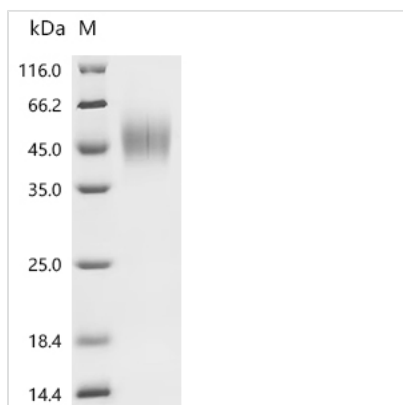


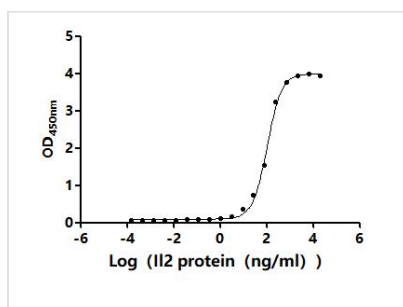


Recombinant Mouse Interleukin-2 receptor subunit alpha (Il2ra), partial (Active)

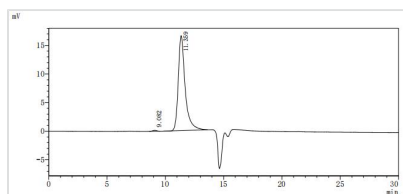
Product Code	CSB-MP011649MO1
Abbreviation	Recombinant Mouse Il2ra protein, partial (Active)
Storage	The shelf life is related to many factors, storage state, buffer ingredients, storage temperature and the stability of the protein itself. Generally, the shelf life of liquid form is 6 months at -20°C/-80°C. The shelf life of lyophilized form is 12 months at -20°C/-80°C.
Uniprot No.	P01590
Form	Lyophilized powder
Storage Buffer	Lyophilized from a 0.2 µm filtered PBS, 6% Trehalose, pH 7.4
Product Type	Recombinant Protein
Immunogen Species	Mus musculus (Mouse)
Biological Activity	Measured by its binding ability in a functional ELISA. Immobilized Mouse Il2ra at 2 µg/mL can bind Mouse Il2 (CSB-MP011629MOd9). The EC50 is 95.00-116.2 ng/mL.
Purity	Greater than 95% as determined by SDS-PAGE. Greater than 95% as determined by SEC-HPLC.
Sequence	ELCLYDPPEVPNATFKALSYKNGTILNCECKRGFRRLKELVYMRCLGNSWSSN CQCTSNSHDKSRKQVTAQLEHQKEQQTTTDMQKPTQSMHQENLTGHCREPP PWKHEDSKRIYHFVEGQSVHYECIPGYKALQRGPAISICKMKCGKTGWTQPQ LTCVDEREHHRFLASEESQGSRNSSPESETSCPITTTDFPQPTETTAMTETFV LTMEYK
Source	Mammalian cell
Target Names	Il2ra
Expression Region	22-236aa
Notes	Repeated freezing and thawing is not recommended. Store working aliquots at 4°C for up to one week.
Tag Info	C-terminal 10xHis-tagged
Mol. Weight	26.5 kDa
Protein Length	Partial
Image	



(Tris-Glycine gel) Discontinuous SDS-PAGE (reduced) with 5% enrichment gel and 15% separation gel.



Activity
Measured by its binding ability in a functional ELISA. Immobilized Mouse IL2ra at 2 µg/ml can bind Mouse IL2 (CSB-MP011629MOD9). The EC_{50} is 95.00-116.2 ng/mL.



The purity of IL2ra was greater than 95% as determined by SEC-HPLC

Endotoxin

Less than 1.0 EU/ug as determined by LAL method.

Reconstitution

We recommend that this vial be briefly centrifuged prior to opening to bring the contents to the bottom. Please reconstitute protein in deionized sterile water to a concentration of 0.1-1.0 mg/mL. We recommend to add 5-50% of glycerol (final concentration) and aliquot for long-term storage at -20°C/-80°C. Our default final concentration of glycerol is 50%. Customers could use it as reference.

Shelf Life

The shelf life is related to many factors, storage state, buffer ingredients, storage temperature and the stability of the protein itself. Generally, the shelf life of liquid form is 6 months at -20°C/-80°C. The shelf life of lyophilized form is 12 months at -20°C/-80°C.