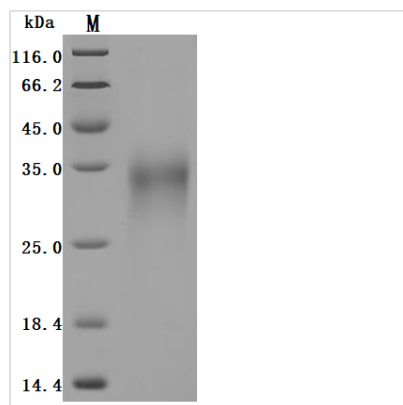


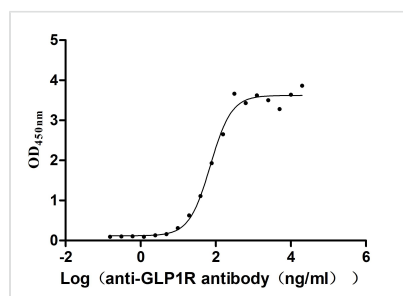


# Recombinant Human Glucagon-like peptide 1 receptor (GLP1R), partial (Active)

<b>Product Code</b>	CSB-MP009514HUb1
<b>Abbreviation</b>	Recombinant Human GLP1R protein, partial (Active)
<b>Storage</b>	The shelf life is related to many factors, storage state, buffer ingredients, storage temperature and the stability of the protein itself. Generally, the shelf life of liquid form is 6 months at -20°C/-80°C. The shelf life of lyophilized form is 12 months at -20°C/-80°C.
<b>Uniprot No.</b>	P43220
<b>Form</b>	Lyophilized powder
<b>Storage Buffer</b>	Lyophilized from a 0.2 µm filtered 20 mM Tris-HCl, 0.5 M NaCl, 6% Trehalose, pH 8.0
<b>Product Type</b>	Recombinant Protein
<b>Immunogen Species</b>	Homo sapiens (Human)
<b>Biological Activity</b>	Measured by its binding ability in a functional ELISA. Immobilized Human GLP1R at 2 µg/mL can bind Anti-GLP1R recombinant antibody (CSB-RA009514MA1HU), the EC50 is 54.54-94.23 ng/mL.
<b>Purity</b>	Greater than 95% as determined by SDS-PAGE.
<b>Sequence</b>	RPQGATVSLWETVQKWREYRRQCQRSLTEDPPPATDLFCNRTFDEYACWPD GEPGSFVNVSCLPWYLPWASSVPQGHVYRFCTAEGLWLQKDNSSLPWDLSE CEESKRGERSSPEEQLLFLY
<b>Research Area</b>	Cardiovascular
<b>Source</b>	Mammalian cell
<b>Target Names</b>	GLP1R
<b>Expression Region</b>	24-145aa
<b>Notes</b>	Repeated freezing and thawing is not recommended. Store working aliquots at 4°C for up to one week.
<b>Tag Info</b>	N-terminal 10xHis-tagged and C-terminal Myc-tagged
<b>Mol. Weight</b>	19.3 kDa
<b>Protein Length</b>	Partial
<b>Image</b>	



(Tris-Glycine gel) Discontinuous SDS-PAGE (reduced) with 5% enrichment gel and 15% separation gel.



**Activity**  
Measured by its binding ability in a functional ELISA. Immobilized Human GLP1R at 2 µg/mL can bind Anti-GLP1R recombinant antibody (CSB-RA009514MA1HU), the EC<sub>50</sub> is 54.54-94.23 ng/mL.

## Description

This Human GLP1R recombinant protein was produced in mammalian cell, where the gene sequence encoding Human GLP1R (24-145aa) was expressed with the N-terminal 10xHis tag and C-terminal Myc-tag. The purity of this GLP1R protein was greater than 95% by SDS-PAGE. The activity was validated.

GLP1R is expressed in model organisms and humans and shows a high degree of conservation. It is widely distributed in tissues such as pancreatic islets, stomach, small intestine, heart, kidney, lung and brain in the body. GLP1R is expressed in islet β cells, but its expression in human islet α and δ cells is still controversial. GLP1R belongs to the Gs subclass of G protein-coupled receptors. It is a pleiotropic coupled receptor that regulates cellular pathways mainly by coupling with various G proteins. Studies have shown that GLP1R can be used as an important target for diabetes treatment. However, the molecular mechanism of GLP1R activation needs further research and exploration. The development of GLP1R may promote the development of drug-like molecules, which will also help provide a reference for the development and utilization of the next generation of diabetes drugs, and has very important clinical application value.

## Endotoxin

Less than 1.0 EU/ug as determined by LAL method.

## Reconstitution

We recommend that this vial be briefly centrifuged prior to opening to bring the contents to the bottom. Please reconstitute protein in deionized sterile water to a concentration of 0.1-1.0 mg/mL. We recommend to add 5-50% of glycerol (final concentration) and aliquot for long-term storage at -20°C/-80°C. Our default final concentration of glycerol is 50%. Customers could use it as reference.

## Shelf Life

The shelf life is related to many factors, storage state, buffer ingredients, storage temperature and the stability of the protein itself.



Generally, the shelf life of liquid form is 6 months at -20°C/-80°C. The shelf life of lyophilized form is 12 months at -20°C/-80°C.