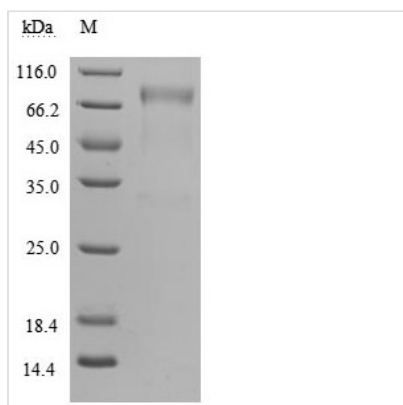


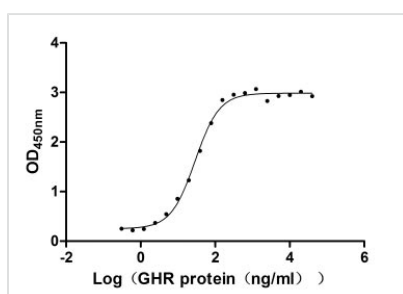


Recombinant Human Growth hormone receptor (GHR), partial (Active)

Product Code	CSB-MP009411HU
Relevance	Receptor for pituitary gland growth hormone involved in regulating postnatal body growth.
Abbreviation	Recombinant Human GHR protein, partial (Active)
Storage	The shelf life is related to many factors, storage state, buffer ingredients, storage temperature and the stability of the protein itself. Generally, the shelf life of liquid form is 6 months at -20°C/-80°C. The shelf life of lyophilized form is 12 months at -20°C/-80°C.
Uniprot No.	P10912
Form	Lyophilized powder
Product Type	Others
Immunogen Species	Homo sapiens (Human)
Biological Activity	①Measured by its binding ability in a functional ELISA. Immobilized GH1 (CSB-MP009407HU) at 1 µg/ml can bind human GHR, the EC ₅₀ of human GHR protein is 24.96-33.39 ng/ml.②Human GH1 protein his/myc tag (CSB-MP009407HU) captured on COOH chip can bind Human GHR protein Fc tag (CSB-MP009411HU) with an affinity constant of 6.1 nM as detected by LSPR Assay.
Purity	Greater than 95% as determined by SDS-PAGE. Greater than 95% as determined by SEC-HPLC.
Sequence	AILSRAPWSLQSVNPGLKTNSSKEPKFTKCRSPERETF SCHWTDEVHHGTKN LGPIQLFYTRRNTQEWTEWKECPDYVSAGENS CYFNSSFTSIWIPYCIKLTS NGGTVDKCFVDEIVQDPPIALNWTLLNVSLTGIHADIQVRWEAPRNADIQK GWMVLEYELQYKEVNETKWKMMDPILTTSVPVYSLKVDKEYEVRVRSKQRNS GNYGEFSEVLYVTLPQMSQFTCEEDFY
Research Area	Cancer
Source	Mammalian cell
Target Names	GHR
Expression Region	27-264aa
Notes	Repeated freezing and thawing is not recommended. Store working aliquots at 4°C for up to one week.
Tag Info	C-terminal hFc1-tagged
Mol. Weight	58.8 kDa
Protein Length	Partial
Image	

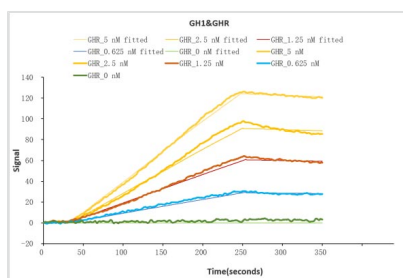


(Tris-Glycine gel) Discontinuous SDS-PAGE (reduced) with 5% enrichment gel and 15% separation gel.

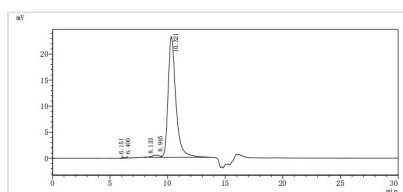


Activity

Measured by its binding ability in a functional ELISA. Immobilized GH1 (CSB-MP009407HU) at 1 µg/ml can bind human GHR, the EC₅₀ of human GHR protein is 24.96-33.39 ng/ml.



Human GH1 protein his/myc tag (CSB-MP009407HU) captured on COOH chip can bind Human GHR protein Fc tag (CSB-MP009411HU) with an affinity constant of 6.1 nM as detected by LSPR Assay.



The purity of GHR was greater than 95% as determined by SEC-HPLC

Description

The recombinant human Mucin-16 (MUC16) is generated by expressing the DNA fragment that corresponds to amino acids Ala27-Tyr264 of the human GHR protein in the mammalian cells. It is tagged with a human IgG1 Fc tag at the C-terminus. It is an active protein with high purity (> 93%, SDS-PAGE) and low endotoxin (< 1.0 EU/ug protein, LAL method). Due to glycosylation, this GHR protein ran to the molecular weight band of approximately 70 kDa. Its bioactivity was validated through functional ELISA and LSPR assay. And it is in stock now.

GHR belongs to the class I cytokine receptor family that is widely expressed in GH target cells. GHR combines with GH to activate diverse signal cascades, leading to growth promotion, cell division, and regeneration. GH-GHR



interaction also influences the metabolism of carbohydrates, lipids, and proteins, shapes body composition, impacts cardiovascular profile, and other physiologic effects.

Endotoxin

Less than 1.0 EU/ug as determined by LAL method.

Reconstitution

We recommend that this vial be briefly centrifuged prior to opening to bring the contents to the bottom. Please reconstitute protein in deionized sterile water to a concentration of 0.1-1.0 mg/mL. We recommend to add 5-50% of glycerol (final concentration) and aliquot for long-term storage at -20°C/-80°C. Our default final concentration of glycerol is 50%. Customers could use it as reference.

Shelf Life

The shelf life is related to many factors, storage state, buffer ingredients, storage temperature and the stability of the protein itself. Generally, the shelf life of liquid form is 6 months at -20°C/-80°C. The shelf life of lyophilized form is 12 months at -20°C/-80°C.