

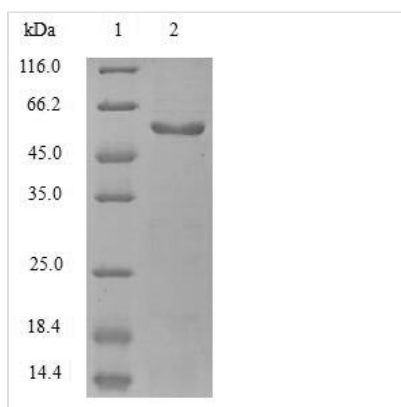


# Recombinant Mouse EGF-containing fibulin-like extracellular matrix protein 1 (Efemp1)

<b>Product Code</b>	CSB-MP007450MO
<b>Relevance</b>	Binds EGFR, the EGF receptor, inducing EGFR autophosphorylation and the activation of downstream signaling pathways. May play a role in cell adhesion and migration. May function as a negative regulator of chondrocyte differentiation. In the olfactory epithelium, it may regulate glial cell migration, differentiation and the ability of glial cells to support neuronal neurite outgrowth
<b>Abbreviation</b>	Recombinant Mouse Efemp1 protein
<b>Storage</b>	The shelf life is related to many factors, storage state, buffer ingredients, storage temperature and the stability of the protein itself. Generally, the shelf life of liquid form is 6 months at -20°C/-80°C. The shelf life of lyophilized form is 12 months at -20°C/-80°C.
<b>Uniprot No.</b>	Q8BPB5
<b>Alias</b>	Fibulin-3
<b>Product Type</b>	Recombinant Protein
<b>Immunogen Species</b>	Mus musculus (Mouse)
<b>Purity</b>	Greater than 90% as determined by SDS-PAGE.
<b>Sequence</b>	QYTEETITYTQCTDGYEWDPIRQQCKDIDECDIVPDACKGGMKCVNHYGGYL CLPKTAQIIVNNEHPQQETPAAEASSGATTGTVAARSMATSGVVPGGGFMAS ATAVAGPEVQTGRNNFVIRRNPPADPQRIPSNPSHRIQCAAGYEQSEHNVCQDI DECTSGTHNCRDQVCINLRGSFTCCQLPGYQKRGEQCVDIDECTVPPYCHQ RCVNTPGSFYCQCSPGFQLAANNYTCVDINECDASNQCAQQCYNILGSFICQ CNQGYELSSDRLNCEDIDECRTSSYLCQYQCVNEPGKFSCMCPQGYEVVRS RTCQDINECETTNECREDEM CWNYHGGFRCYPRNPCQDHYVLTSENRCVCP VSNTMCRELPQSIVYKYMSIRSDRSVPSDIFQIQATMIYANTINTFRIKSGNENG EFYLRQTSPVSAMLVLVKSLSGPREYIVDLEMLTVSSIGTFRTSSVLRLTIIVGPF SF
<b>Research Area</b>	Signal Transduction
<b>Source</b>	Mammalian cell
<b>Target Names</b>	Efemp1
<b>Expression Region</b>	18-493aa
<b>Notes</b>	Repeated freezing and thawing is not recommended. Store working aliquots at 4°C for up to one week.
<b>Tag Info</b>	N-terminal Flag-Myc-tagged
<b>Mol. Weight</b>	57.5kDa
<b>Protein Length</b>	Full Length of Mature Protein



## Image



(Tris-Glycine gel) Discontinuous SDS-PAGE (reduced) with 5% enrichment gel and 15% separation gel.

## Reconstitution

We recommend that this vial be briefly centrifuged prior to opening to bring the contents to the bottom. Please reconstitute protein in deionized sterile water to a concentration of 0.1-1.0 mg/mL. We recommend to add 5-50% of glycerol (final concentration) and aliquot for long-term storage at -20°C/-80°C. Our default final concentration of glycerol is 50%. Customers could use it as reference.

## Shelf Life

The shelf life is related to many factors, storage state, buffer ingredients, storage temperature and the stability of the protein itself. Generally, the shelf life of liquid form is 6 months at -20°C/-80°C. The shelf life of lyophilized form is 12 months at -20°C/-80°C.