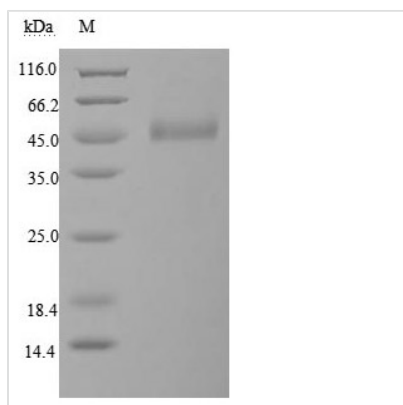


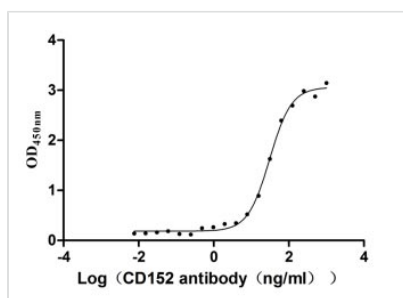


# Recombinant Human Cytotoxic T-lymphocyte protein 4 (CTLA4), partial (Active)

<b>Product Code</b>	CSB-MP006163HU1
<b>Relevance</b>	Inhibitory receptor acting as a major negative regulator of T-cell responses. The affinity of CTLA4 for its natural B7 family ligands, CD80 and CD86, is considerably stronger than the affinity of their cognate stimulatory coreceptor CD28.
<b>Abbreviation</b>	Recombinant Human CTLA4 protein, partial (Active)
<b>Storage</b>	The shelf life is related to many factors, storage state, buffer ingredients, storage temperature and the stability of the protein itself. Generally, the shelf life of liquid form is 6 months at -20°C/-80°C. The shelf life of lyophilized form is 12 months at -20°C/-80°C.
<b>Uniprot No.</b>	P16410
<b>Form</b>	Lyophilized powder
<b>Product Type</b>	Others
<b>Immunogen Species</b>	Homo sapiens (Human)
<b>Biological Activity</b>	Measured by its binding ability in a functional ELISA. Immobilized CD152 at 2 µg/ml can bind Anti-CD152 rabbit monoclonal antibody(CSB-RA213310A0HU), the EC <sub>50</sub> of human CD152 protein is 27.14-34.82 ng/ml.
<b>Purity</b>	Greater than 90% as determined by SDS-PAGE. Greater than 90% as determined by SEC-HPLC.
<b>Sequence</b>	AMHVAQPAVV LASSRGIASFVCEYASPGKATEVRVTVLRQADSQVTEVCAATY MMGNELTFLDDSICTGTSSGNQVNLTIQGLRAMDTGLYICKVELMYPPPYLGI GNGTQIYVIDPEPCPDSDF
<b>Research Area</b>	Cancer
<b>Source</b>	Mammalian cell
<b>Target Names</b>	CTLA4
<b>Expression Region</b>	37-162aa
<b>Notes</b>	Repeated freezing and thawing is not recommended. Store working aliquots at 4°C for up to one week.
<b>Tag Info</b>	C-terminal hFc1-tagged
<b>Mol. Weight</b>	42.5 kDa
<b>Protein Length</b>	Partial
<b>Image</b>	

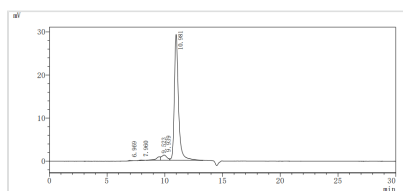


(Tris-Glycine gel) Discontinuous SDS-PAGE (reduced) with 5% enrichment gel and 15% separation gel.



#### Activity

Measured by its binding ability in a functional ELISA. Immobilized CD152 at 2 µg/ml can bind Anti-CD152 rabbit monoclonal antibody(CSB-RA213310A0HU), the EC<sub>50</sub> of human CD152 protein is 27.14-34.82 ng/ml.



The purity of CTLA4 was greater than 90% as determined by SEC-HPLC.

## Description

Human CTLA4 (CD152) amino acid Ala37-Phe162 with an N-terminal linker, a TEV+linker, and a C-terminal human IgG1 Fc tag (Pro100-Lys330), was expressed in mammalian cells. The product is the recombinant human CTLA4 protein. Its bioactivity was measured in a functional ELISA. When the recombinant human CTLA4 is immobilized at 2 µg/ml, the anti-CTLA4 rabbit monoclonal antibody can bind to it with an EC<sub>50</sub> of 27.14-34.82 ng/ml. It reaches up to 90% in purity determined by SDS-PAGE. On the gel, this CTLA4 protein ran to the molecular weight band of approximately 45 kDa. Its endotoxin content is less than 1.0 EU/ug determined by the LAL method. and IT IS available now.

CTLA4 is an inhibitory receptor inducibly expressed following T cell activation. CTLA4 either binds to CD80 or CD86, leading to a costimulatory or a co-inhibitory response, respectively. Due to the dampening effect of CTLA4, it plays a crucial role in the regulation of T-cell homeostasis and self-tolerance.

## Endotoxin

Less than 1.0 EU/ug as determined by LAL method.

## Reconstitution

We recommend that this vial be briefly centrifuged prior to opening to bring the contents to the bottom. Please reconstitute protein in deionized sterile water to a concentration of 0.1-1.0 mg/mL. We recommend to add 5-50% of glycerol (final concentration) and aliquot for long-term storage at -20°C/-80°C. Our default final concentration of glycerol is 50%. Customers could use it as reference.



## **Shelf Life**

The shelf life is related to many factors, storage state, buffer ingredients, storage temperature and the stability of the protein itself.

Generally, the shelf life of liquid form is 6 months at -20°C/-80°C. The shelf life of lyophilized form is 12 months at -20°C/-80°C.