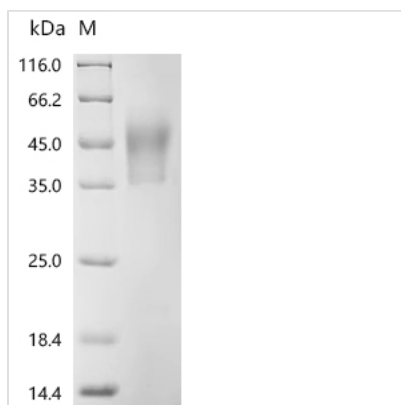


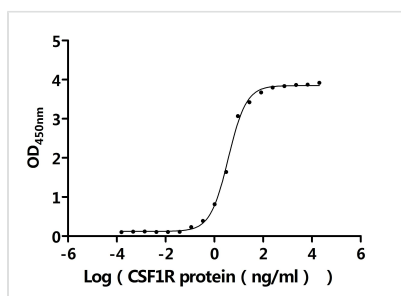


Recombinant Mouse Macrophage colony-stimulating factor 1 (Csf1), partial (Active)

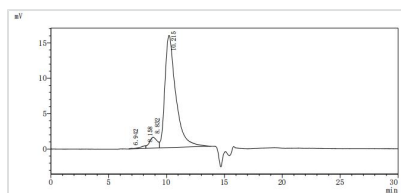
Product Code	CSB-MP006043MO
Abbreviation	Recombinant Mouse Csf1 protein, partial (Active)
Storage	The shelf life is related to many factors, storage state, buffer ingredients, storage temperature and the stability of the protein itself. Generally, the shelf life of liquid form is 6 months at -20°C/-80°C. The shelf life of lyophilized form is 12 months at -20°C/-80°C.
Uniprot No.	P07141
Form	Lyophilized powder
Storage Buffer	Lyophilized from a 0.2 µm sterile filtered PBS, 6% Trehalose, pH 7.4
Product Type	Recombinant Protein
Immunogen Species	Mus musculus (Mouse)
Biological Activity	Measured by its binding ability in a functional ELISA. Immobilized Mouse Csf1 at 2 µg/mL can bind Mouse Csf1r(CSB-MP006044MO). The EC50 is 3.226-4.264 ng/mL.
Purity	Greater than 90% as determined by SEC-HPLC. Greater than 95% as determined by SDS-PAGE.
Sequence	KEVSEHCSHMIGNGHLKVLQQLIDSQMETSCQIAFEFVDQEQLDDPVCYLKKA FFLVQDIIDETMRFKDNTPNANATERLQELSNLNSCFTKDYEEQNKACVRTF HETPLQLLEKIKNFFNETKNLLEKDWNIPTKNCNNSFAKCSSRDVVTKPDCNCL YPKATPSSDPASASPHQPPAPSMAPLAGLAWDDSQRTGSSLLPSELPLRIED PGSAKQRPPRSTCQTLE
Source	Mammalian cell
Target Names	Csf1
Expression Region	33-262aa
Notes	Repeated freezing and thawing is not recommended. Store working aliquots at 4°C for up to one week.
Tag Info	C-terminal 10xHis-tagged
Mol. Weight	27.4 kDa
Protein Length	Partial
Image	



(Tris-Glycine gel) Discontinuous SDS-PAGE (reduced) with 5% enrichment gel and 15% separation gel.



Activity
Measured by its binding ability in a functional ELISA. Immobilized Mouse Csf1 at 2 µg/ml can bind Mouse Csf1r(CSB-MP006044MO). The EC_{50} is 3.226-4.264 ng/mL.



The purity of Csf1 was greater than 90% as determined by SEC-HPLC

Endotoxin

Less than 1.0 EU/ug as determined by LAL method.

Reconstitution

We recommend that this vial be briefly centrifuged prior to opening to bring the contents to the bottom. Please reconstitute protein in deionized sterile water to a concentration of 0.1-1.0 mg/mL. We recommend to add 5-50% of glycerol (final concentration) and aliquot for long-term storage at -20°C/-80°C. Our default final concentration of glycerol is 50%. Customers could use it as reference.

Shelf Life

The shelf life is related to many factors, storage state, buffer ingredients, storage temperature and the stability of the protein itself. Generally, the shelf life of liquid form is 6 months at -20°C/-80°C. The shelf life of lyophilized form is 12 months at -20°C/-80°C.