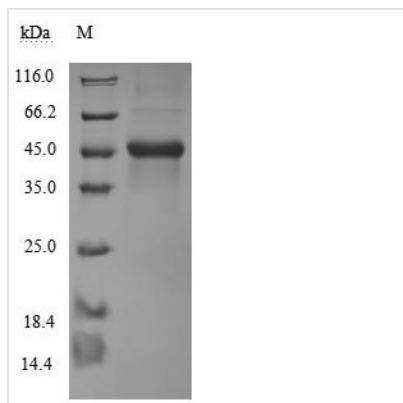


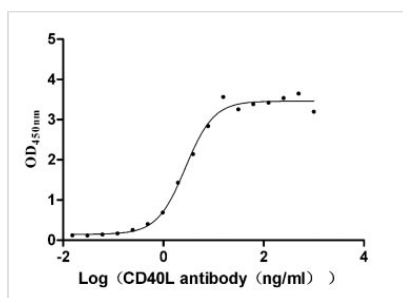


# Recombinant Human CD40 ligand (CD40LG), partial (Active)

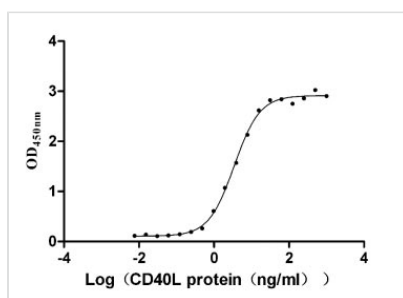
<b>Product Code</b>	CSB-MP004937HU3
<b>Abbreviation</b>	Recombinant Human CD40LG protein, partial (Active)
<b>Storage</b>	The shelf life is related to many factors, storage state, buffer ingredients, storage temperature and the stability of the protein itself. Generally, the shelf life of liquid form is 6 months at -20°C/-80°C. The shelf life of lyophilized form is 12 months at -20°C/-80°C.
<b>Uniprot No.</b>	P29965
<b>Form</b>	Lyophilized powder
<b>Storage Buffer</b>	Lyophilized from a 0.2 µm filtered PBS, 6% Trehalose, pH 7.4
<b>Product Type</b>	Recombinant Protein
<b>Immunogen Species</b>	Homo sapiens (Human)
<b>Biological Activity</b>	①Measured by its binding ability in a functional ELISA. Immobilized CD40L at 2 µg/ml can bind Anti- CD40L Rabbit Monoclonal Antibody(CSB-RA156386A0HU), the EC <sub>50</sub> is 2.353-3.232 ng/ml.②Measured by its binding ability in a functional ELISA. Immobilized CD40(CSB-MP004936HU1) at 2 µg/ml can bind CD40L, the EC <sub>50</sub> is 3.112-3.858 ng/ml. ③Human CD40 protein hFc tag (CSB-MP004936HU1) captured on COOH chip can bind Human CD40L protein hFc and Flag tag (CSB-MP004937HU3) with an affinity constant of 2.06 nM as detected by LSPR Assay.
<b>Purity</b>	Greater than 90% as determined by SDS-PAGE.
<b>Sequence</b>	MQKGDQNPQIAAHVISEASSKTTSVLQWAEKGYTMSNNLVTLENGKQLTVK RQGLYYIYAQVTFCSNREASSQAPFIASLCLKSPGRFERILLRAANTHSSAKPC GQQSIHLGGVFELQPGASVFNVTDPQSQVSHGTGFTSFGLLKL
<b>Research Area</b>	Cancer
<b>Source</b>	Mammalian cell
<b>Target Names</b>	CD40LG
<b>Expression Region</b>	113-261aa
<b>Notes</b>	Repeated freezing and thawing is not recommended. Store working aliquots at 4°C for up to one week.
<b>Tag Info</b>	N-terminal hFc-Flag-tagged
<b>Mol. Weight</b>	44.5 kDa
<b>Protein Length</b>	Partial
<b>Image</b>	



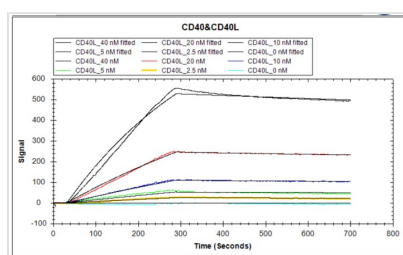
(Tris-Glycine gel) Discontinuous SDS-PAGE (reduced) with 5% enrichment gel and 15% separation gel.



**Activity**  
Measured by its binding ability in a functional ELISA. Immobilized CD40L at 2 µg/ml can bind Anti- CD40L Rabbit Monoclonal Antibody(CSB-RA156386A0HU), the EC<sub>50</sub> is 2.353-3.232 ng/ml.



**Activity**  
Measured by its binding ability in a functional ELISA. Immobilized CD40(CSB-MP004936HU1) at 2 µg/ml can bind CD40L, the EC<sub>50</sub> is 3.112-3.858 ng/ml.



**Activity**  
Human CD40 protein hFc tag (CSB-MP004936HU1) captured on COOH chip can bind Human CD40L protein hFc and Flag tag (CSB-MP004937HU3) with an affinity constant of 2.06 nM as detected by LSPR Assay.

## Description

Human CD40 ligand (CD40LG) amino acid Met13-Leu261, with an N-terminal hFc-Flag-tag as well as an N-terminal linker, was expressed in mammalian cells. The product is the recombinant human CD40LG protein. The SDS-PAGE analysis determined its purity greater than 90% and showed a molecular weight band of about 45 kDa on the gel. It contains low levels of endotoxin, less than 1.0 EU/ug measured by the LAL method. Functional ELISA and LSPR assay of this CD40LG protein showed that it is an active protein. This protein is in stock so that it will reach your lab bench faster.

CD40LG, also known as CD154, is a ligand for the CD40. It is preferentially expressed by activated CD4<sup>+</sup> T cells as well as activated B cells and platelets.



The interaction of CD40 and CD40LG plays an essential role in immune regulation and homeostasis. The CD40-CD40L system is also involved in the pathophysiology of several diseases, including autoimmune diseases, atherothrombosis, respiratory disease, and cancer.

**Endotoxin**

Less than 1.0 EU/ug as determined by LAL method.

**Reconstitution**

We recommend that this vial be briefly centrifuged prior to opening to bring the contents to the bottom. Please reconstitute protein in deionized sterile water to a concentration of 0.1-1.0 mg/mL. We recommend to add 5-50% of glycerol (final concentration) and aliquot for long-term storage at -20°C/-80°C. Our default final concentration of glycerol is 50%. Customers could use it as reference.

**Shelf Life**

The shelf life is related to many factors, storage state, buffer ingredients, storage temperature and the stability of the protein itself. Generally, the shelf life of liquid form is 6 months at -20°C/-80°C. The shelf life of lyophilized form is 12 months at -20°C/-80°C.