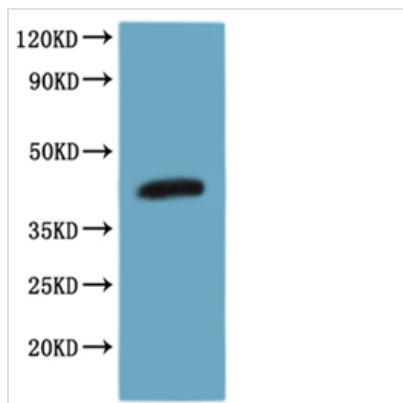


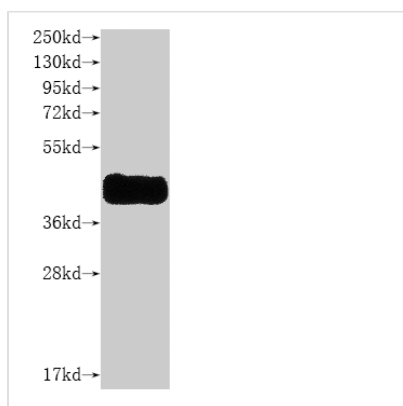


# Recombinant Human C-C chemokine receptor type 8 (CCR8)-VLPs (Active)

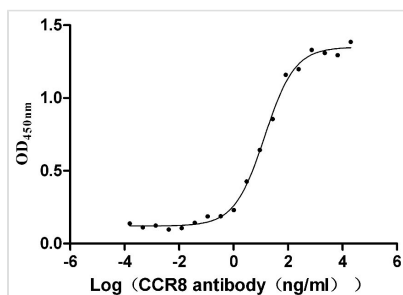
<b>Product Code</b>	CSB-MP004847HU
<b>Abbreviation</b>	Recombinant Human CCR8 protein-VLPs (Active)
<b>Storage</b>	The shelf life is related to many factors, storage state, buffer ingredients, storage temperature and the stability of the protein itself. Generally, the shelf life of liquid form is 6 months at -20°C/-80°C. The shelf life of lyophilized form is 12 months at -20°C/-80°C.
<b>Uniprot No.</b>	P51685
<b>Form</b>	Liquid
<b>Storage Buffer</b>	PBS, pH 7.4, 6% trehalose
<b>Product Type</b>	Recombinant Protein
<b>Immunogen Species</b>	Homo sapiens (Human)
<b>Biological Activity</b>	Measured by its binding ability in a functional ELISA. Immobilized human CCR8 (CSB-MP004847HU) at 5 µg/ml can bind Anti-CCR8 recombinant Antibody, the the EC <sub>50</sub> is 11.13-17.29 ng/ml.
<b>Purity</b>	Greater than 90% as determined by SEC-HPLC.
<b>Sequence</b>	MDYTLDLSTTVTDYYPDIFSSPCDAELIQTNGKLLAVFYCLLFVFSLLGNSL VILVLVCKKLRSITDVYLLNLALSDLLFVFSFPFQTYLLDQWVFGTVMCKVVS GFYYIGFYSSMFFITLMSVDRYLAVVHAVYALKVRTIRMGTTLCLAVWLTAIMAT IPLLVFYQVASEDGVLCYSFYNNQQLKWKIFTNFKMNLGLLIPFTIFMFCYIKIL HQLKRCQNHNKTKAIRLVLVVIASLLFWVPFNVVLFSLHSMHILDGCSISQQ LTYATHVTEIISFTHCCVNPVIYAFVGEKFKKHLSEIFQKSCSQIFNYLGRQMPPR ESCEKSSSCQQHSSSRSSSVDYIL
<b>Research Area</b>	cancer
<b>Source</b>	Mammalian cell
<b>Target Names</b>	CCR8
<b>Expression Region</b>	1-355aa
<b>Notes</b>	Repeated freezing and thawing is not recommended. Store working aliquots at 4°C for up to one week.
<b>Tag Info</b>	C-terminal 10xHis-tagged (This tag can be tested only under denaturing conditions)
<b>Mol. Weight</b>	42.2 kDa
<b>Protein Length</b>	Full Length
<b>Image</b>	



CSB-MP004847HU is detected by Mouse anti-6\*His monoclonal antibody.

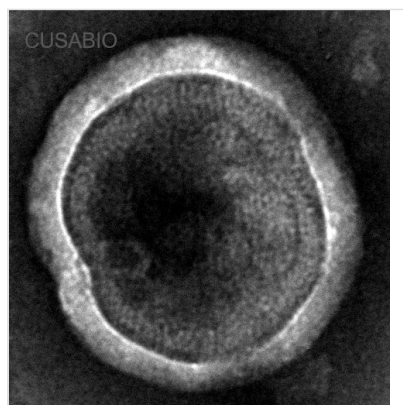


CSB-MP004847HU is detected by Anti-CCR8 recombinant Antibody

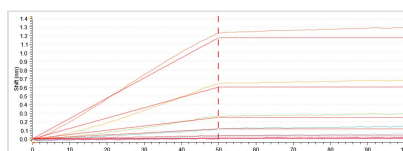


#### Activity

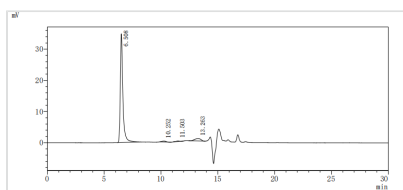
Measured by its binding ability in a functional ELISA. Immobilized human CCR8 (CSB-MP004847HU) at 5 µg/ml can bind Anti-CCR8 recombinant Antibody, the the EC<sub>50</sub> is 11.13-17.29 ng/ml.



The presence of VLP-like structures was confirmed by TEM



Loaded Anti-Human CCR8 Antibody (CSB-RA004847MA3HU) on 96-Flat plate, can bind Human CCR8, with an affinity constant of ?1 pM as determined in BLI assay (Gator Prime).



The purity of VLPs was greater than 90% as determined by SEC-HPLC

## Description

Recombinant full-length human CCR8 protein was expressed by the intact DNA sequence of the human CCR8 in mammalian cells. This recombinant CCR8 protein was fused with a 10xHis-tag at the C-terminus. It contains less than 1.0 EU/ug determined by the LAL method. The CCR8 protein is biologically active as it can react with the mouse anti-6xHis monoclonal antibody and anti-CCR8 recombinant antibody, respectively. Its VLP-like structure was observed and confirmed by TEM. This recombinant CCR8 protein is highly immunogenic because it carries viral protein.

Past studies have shown that the CCR8 protein is mainly expressed on monocytes, Th2 cells, and Treg cells. Many basic studies have also proved CCR8 plays an essential role in the biological processes of lymph node migration of monocyte-derived dendritic cells and Th2 cell-mediated type 2 inflammation. Researchers have found that CCR8 is a good biomarker of Treg cells at tumor sites and a potential tumor immune target. Subsequent studies found that the presence or absence of CCR8 does not affect the migration ability of Treg and its function in the tumor microenvironment. The development of CCR8-targeted monoclonal antibody drugs is expected to specifically inhibit the function of Treg at the tumor site and contribute to cancer treatment.

## Endotoxin

Less than 1.0 EU/ug as determined by LAL method.

## Shelf Life

The shelf life is related to many factors, storage state, buffer ingredients, storage temperature and the stability of the protein itself. Generally, the shelf life of liquid form is 6 months at -20°C/-80°C. The shelf life of lyophilized form is 12 months at -20°C/-80°C.